

WAAS CH 86405 W20A	APP CRS 204°	Rwy Ldg TDZE Apt Elev	8919 270 270
--	------------------------	-----------------------------	---

RNAV (GPS) RWY 20

WESTFIELD-BARNES RGNL (B.A.F.)

⚠ Baro-VNAV NA when using Bradley Intl altimeter setting. For uncompensated Baro-VNAV systems, LNAV/VNAV NA below -15°C (5°F) or above 54°C (130°F). DME/DME RNP-0.3 NA. When local altimeter setting not received, use Bradley Intl altimeter setting and increase LPV DA to 561; LNAV/VNAV DA to 996 and increase all Cats visibility to 2¼; all MDA 60 feet and LNAV Cats B, C, D and E visibility to 1¼. For inoperative MALSR, increase LPV Cat E visibility to RVR 4000, LNAV/VNAV all Cats visibility to 2½, LNAV Cat E visibility to 1½. Night landing: Rwy 15 NA.

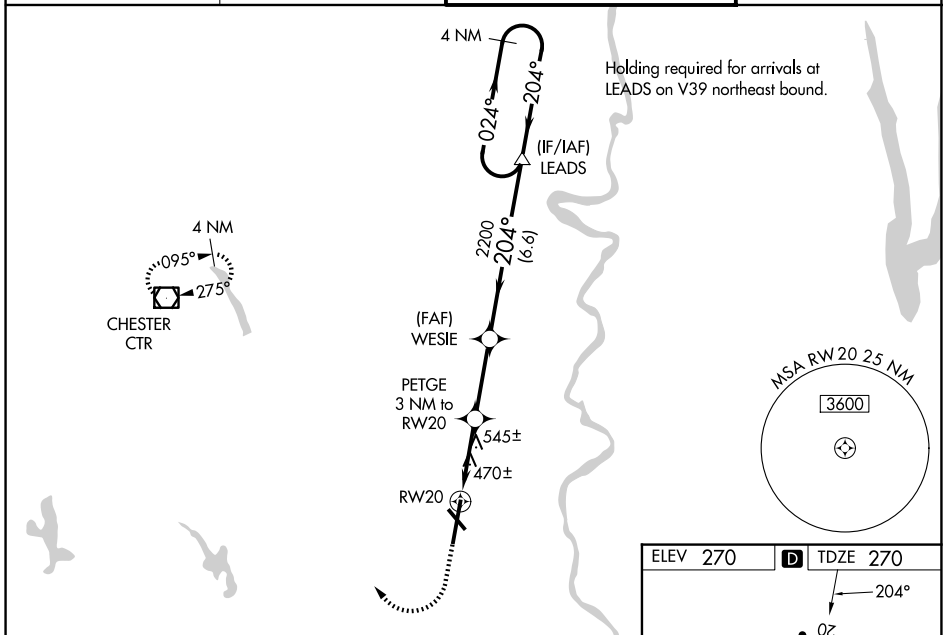
MALSR
A5
MISSED APPROACH:
Climb to 1700 then climbing right turn to 4000 direct CTR VOR/DME and hold.

ATIS
127.1 263.15

BRADLEY APP CON
125.35 281.5

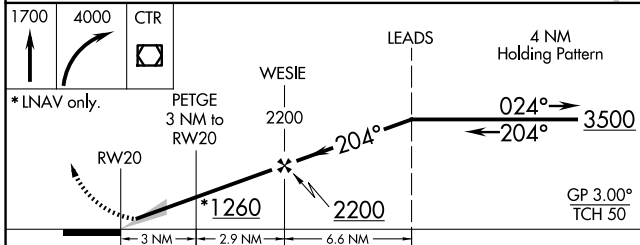
WESTFIELD TOWER ★
125.075 (CTAF) 0 251.1

GND CON
121.7 289.4

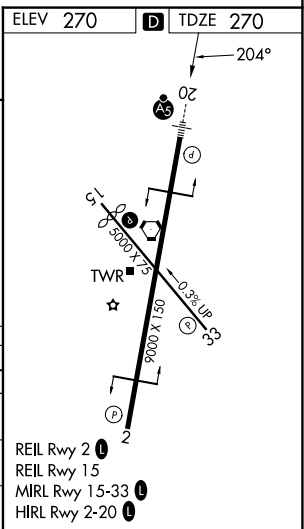


NE-1, 14 MAY 2026 to 11 JUN 2026

NE-1, 14 MAY 2026 to 11 JUN 2026



CATEGORY	A	B	C	D	E
LPV DA		520/24	250 (300-½)		
LNAV/VNAV DA		955-1⅞	685 (700-1⅞)		
LNAV MDA	800/24	530 (600-½)	800/55	530 (600-1)	
CIRCLING	1160-1¼	890 (900-1¼)	1160-2¾ 890 (900-2¾)	1660-3	1390 (1400-3)



REIL Rwy 2 **1**
REIL Rwy 15 **1**
MIRL Rwy 15-33 **1**
HIRL Rwy 2-20 **1**