

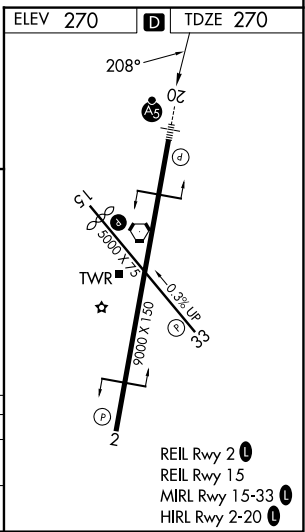
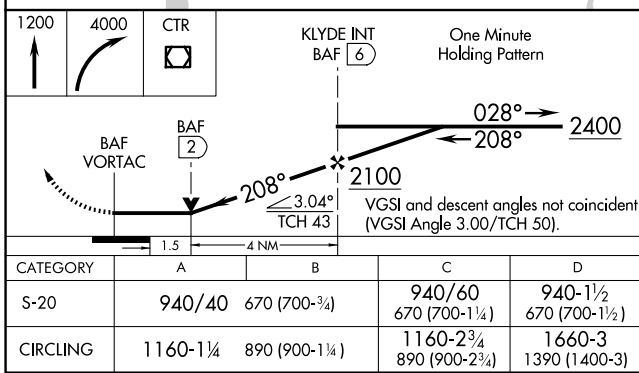
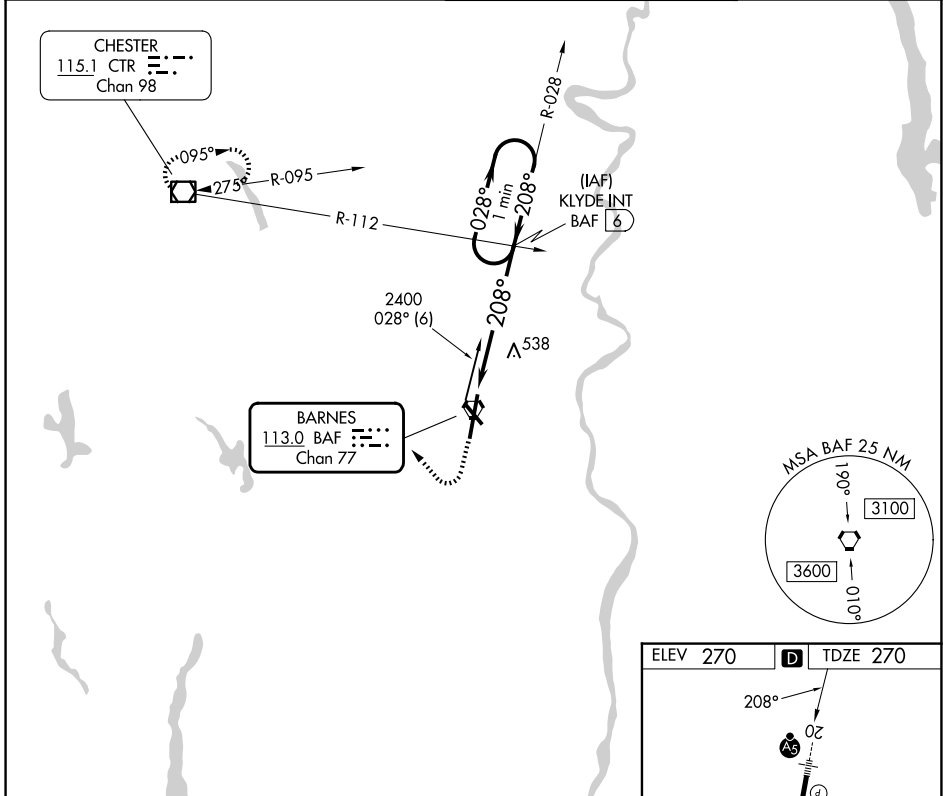
BAF VORTAC <b>113.0</b> Chan 77	APP CRS <b>208°</b>	Rwy Ldg <b>8919</b> TDZE <b>270</b> Apt Elev <b>270</b>
---------------------------------------	------------------------	---

# VOR RWY 20

WESTFIELD-BARNES RGNL (BAF)

 -20°C	For inoperative MALS, increase Cat A/B visibility to RVR 5000. Night landing: Rwy 15 NA.	MALS 	MISSED APPROACH: Climb to 1200, then climbing right turn to 4000 direct CTR VOR/DME and hold, continue climb in hold to 4000.
-----------	--	----------	---

ATIS <b>127.1 263.15</b>	BRADLEY APP CON <b>125.35 281.5</b>	WESTFIELD TOWER ★ <b>125.075 (CTAF) 0 251.1</b>	GND CON <b>121.7 289.4</b>
-----------------------------	--	--	-------------------------------



NE-1, 14 MAY 2026 to 11 JUN 2026

NE-1, 14 MAY 2026 to 11 JUN 2026