

BAF VORTAC 113.0 Chan 77	APP CRS 025°	Rwy Ldg TDZE 264 Apt Elev 270
--	------------------------	---

VOR or TACAN RWY 2

WESTFIELD-BARNES RGNL (BAF)

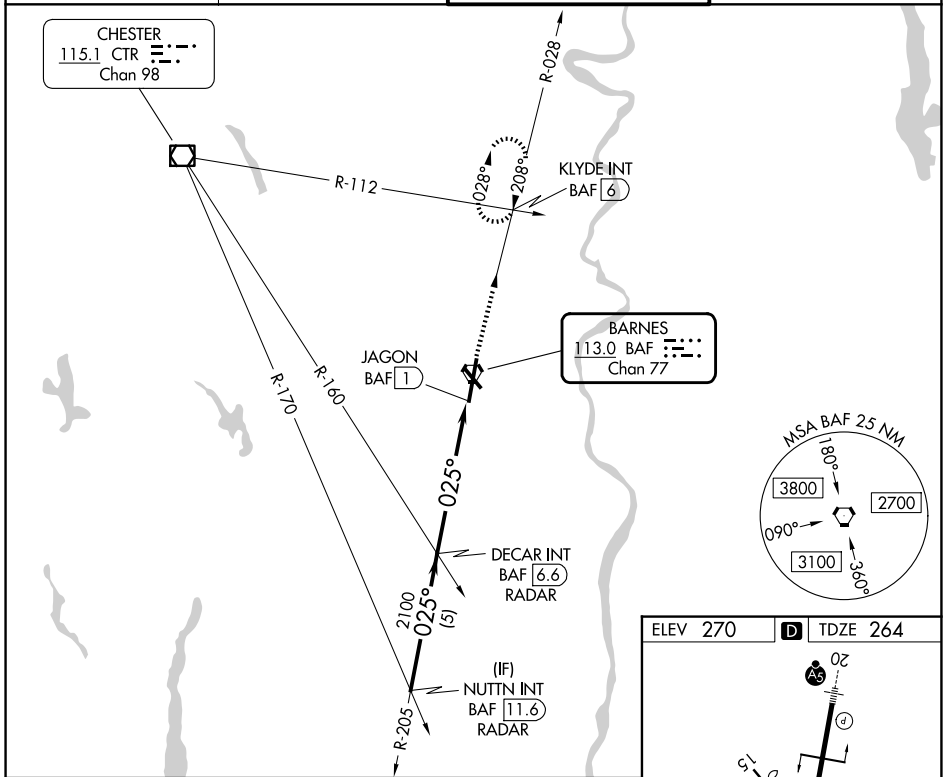
RADAR required for procedure entry.

⚠ Rwy 2 helicopter visibility reduction below 3/4 SM NA. When local altimeter setting not received, use BDL altimeter setting and increase all MDAs 60 feet and S-2 visibility Cat C/D/E 1/4 SM. VDP NA when using BDL altimeter setting.

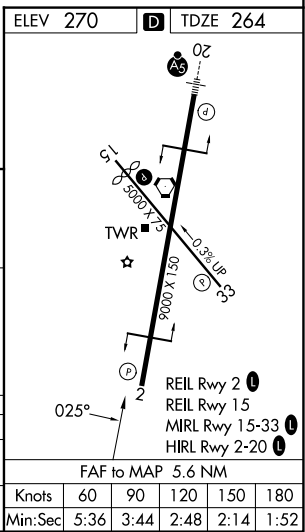
❄ -20°C
Circling Rwy 15 NA at night.

MISSED APPROACH: Climb to 3000 on BAF VORTAC R-028 to KLYDE INT/BAF 6 DME and hold, continue climb-in-hold to 3000.

ATIS 127.1 263.15	BRADLEY APP CON 125.35 281.5	WESTFIELD TOWER ★ 125.075 (CTAF) 0 251.1	GND CON 121.7 289.4
-----------------------------	--	--	-------------------------------



NUTTN INT BAF 11.6 RADAR	VGSI and descent angles not coincident (VGSI Angle 3.00/TCH 50).		3000	KLYDE INT	
3000	025°	2100	3.02° TCH 43	BAF R-028	
5 NM		3.8 NM		JAGON BAF 1	
				BAF VORTAC	
CATEGORY	A	B	C	D	E
S-2	900-1	636 (700-1)	900-1 3/4 636 (700-1 3/4)		
CIRCLING	1160-1 1/4	890 (900-1 1/4)	1160-2 3/4 890 (900-2 3/4)	1660-3	1390 (1400-3)



NE-1, 14 MAY 2026 to 11 JUN 2026

NE-1, 14 MAY 2026 to 11 JUN 2026