

RNAV (GPS) RWY 23

| | | |
|----------|------------|--------|
| APCH CRS | Rwy Idg | 11,597 |
| 228° | TDZE | 241 |
| | Arprt Elev | 241 |

AL-447 (USAF)

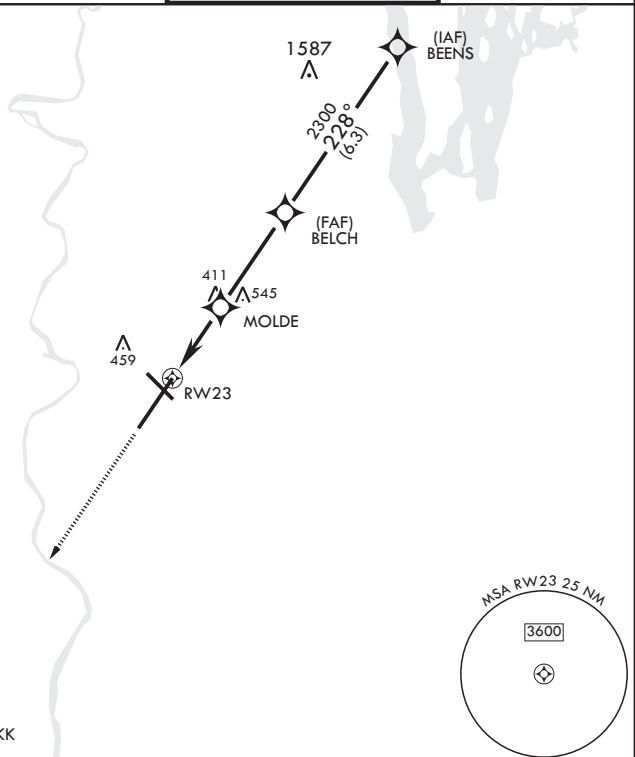
WESTOVER ARB METROPOLITAN (KCEF)

| | | |
|---|--------|--|
| RNP APCH. | ALSF-1 | MISSED APPROACH: Climb to 1000, then climbing left turn to 3000 direct HERKK and hold. |
| DME/DME RNP-0.3 NA. | | |
| * When ALS inop, increase vis to 1 3/8 miles. | | |

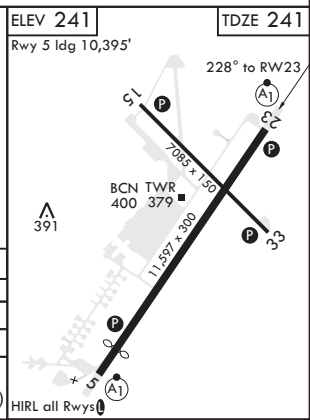
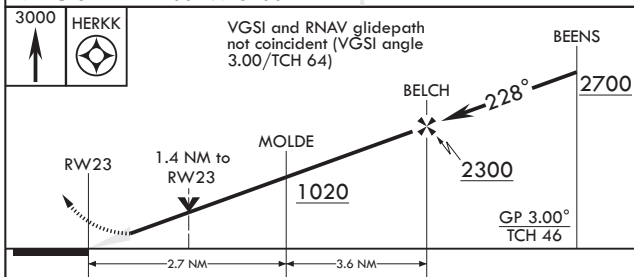
| | | | |
|------------------|---|----------------------------------|-------------------------|
| ATIS* 127.525 | BRADLEY APP CON/DEP CON 125.35 281.5 | TOWER* 134.85 (CTAF) 0 348.75 | GND CON 118.35 275.8 |
|------------------|---|----------------------------------|-------------------------|

** When ALS inop, increase CAT AB RVR to 55, vis to 1 mile; CAT CDE vis to 1 3/8 miles.
 *** Circling not authorized from Rwy 23 clockwise to Rwy 33.

For uncompensated Baro-VNAV systems, Procedure NA below -15°C (5°F) or above 54°C (130°F).



EMERG SAFE ALT 100 NM 6400



| CATEGORY | A | B | C | D | E |
|---------------|----------------------|----------------------|------------------------------|-------------------------------|-----------------------|
| LNAV/VNAV DA* | 760/55 | | 519 | (600-1) | |
| LNAV MDA** | 760/24 | 519 (600-1/2) | 760/55 | 519 | (600-1) |
| CIRCLING*** | 760-1 519 (600-1) | 780-1 539 (600-1) | 840-1 1/2 599 (600-1 1/2) | 1060-2 3/4 819 (900-2 3/4) | 1080-3 839 (900-3) |

RNAV (GPS) RWY 23

NE-1, 14 MAY 2026 to 11 JUN 2026

NE-1, 14 MAY 2026 to 11 JUN 2026