

# TACAN RWY 23

TACAN CEF Chan <b>87</b>	APCH CRS <b>220°</b>	Rwy Idg <b>11,597</b> TDZE <b>241</b> Arprt Elev <b>241</b>
-----------------------------	-------------------------	---

[USAF]

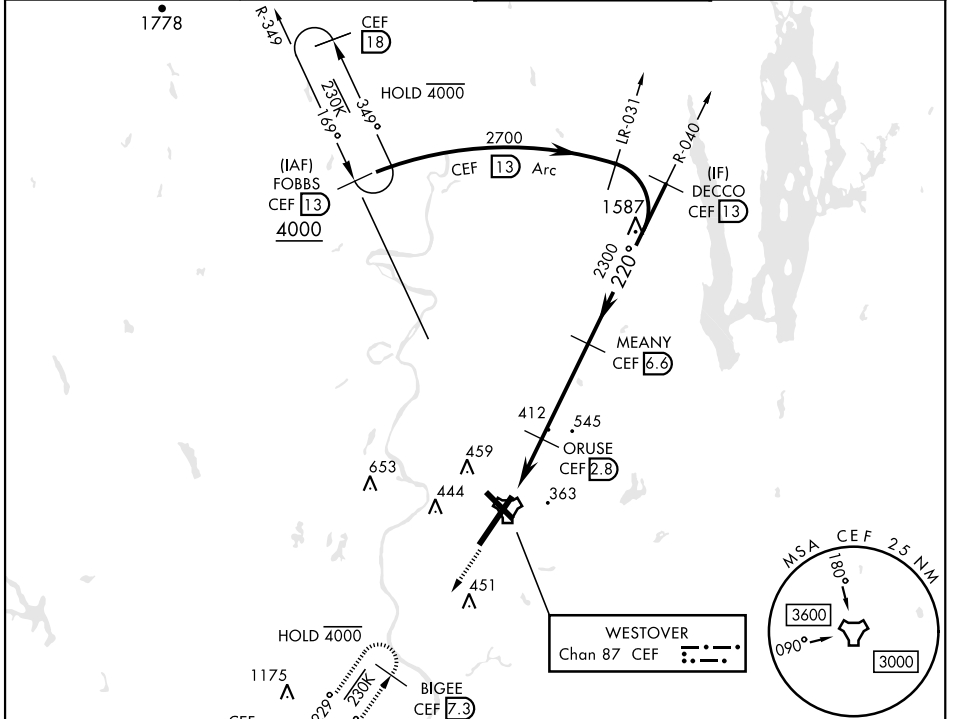
WESTOVER ARB METROPOLITAN (KCEF)

▼ \* When ALS inop, increase CAT AB RVR to 55 and vis to 1 mile, CAT CDE vis to 1<sup>1</sup>/<sub>2</sub> miles.  
 \*\* Circling not authorized all CAT acft from RWY 23 clockwise to RWY 33.

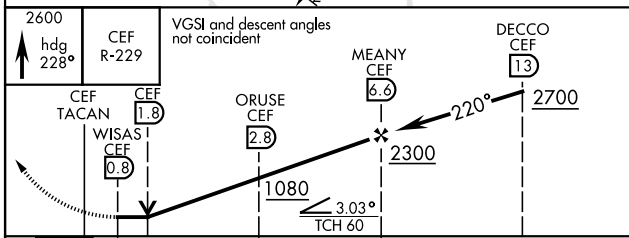


MISSED APPROACH: Climb to 2600 on heading 228° to intercept CEF TACAN R-229 direct BIGEE and hold.

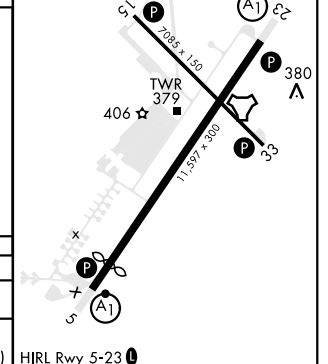
ATIS ★ <b>127.525</b>	BRADLEY APP CON <b>125.35 281.5</b>	TOWER ★ <b>134.85 (CTAF) 348.75</b>	GND CON <b>118.35 275.8</b>
--------------------------	--	--	--------------------------------



EMERG SAFE ALT 100 NM 6400



ELEV <b>241</b>	TDZE <b>241</b>
Rwy 5 Idg 10,395'	



CATEGORY	A	B	C	D	E
S-23 *	760/24 519 (600-1/2)		760/55 519 (600-1)		
CIRCLING **	760-1 519 (600-1)	780-1 539 (600-1)	840-1 1/2 599 (600-1 1/2)	1060-2 3/4 819 (900-2 3/4)	1080-3 839 (900-3)

# TACAN RWY 23

NE-1, 14 MAY 2026 to 11 JUN 2026

NE-1, 14 MAY 2026 to 11 JUN 2026