

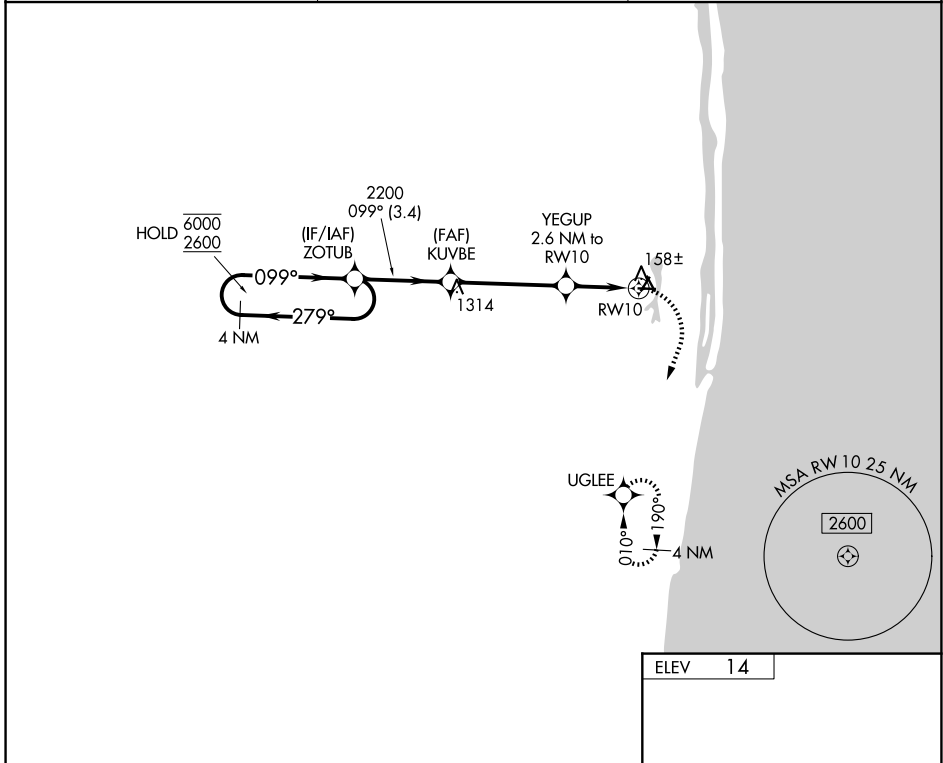
APP CRS	Rwy Ldg	N/A
099°	TDZE	N/A
	Apt Elev	14

RNAV (GPS)-A

PALM BEACH COUNTY PARK (LNA)

RNP APCH - GPS.	MISSED APPROACH: (Do not exceed 210K until turn completion) Climbing right turn to 2000 direct UGLEE and hold; continue climb-in-hold to 2000.
Rwy 10 helicopter visibility reduction below 1 SM NA. Circling Rwy 4, 16, 22, 28, 34 NA at night.	

AWOS-3PT 119.925	PALM BEACH APP CON 127.35 343.6	UNICOM 122.7 (CTAF) 0
----------------------------	---	---------------------------------



VGSi and descent angles not coincident (VGSi Angle 4.00/TCH 46).		2000	UGLEE	
<p>4 NM Holding Pattern</p> <p>6000 ← 279° / 2600 → 099°</p> <p>ZOTUB</p> <p>KUVBE</p> <p>YEGUP 2.6 NM to RW10</p> <p>3.00° TCH 46</p> <p>2200</p> <p>880</p> <p>RW10</p> <p>3.4 NM 4.1 NM 2.6 NM</p>		<p>099°</p> <p>3228 X 75</p> <p>3489 X 75</p> <p>3421 X 100</p> <p>16, 22, 28, 34</p>		
CATEGORY	A	B	C	D
CIRCLING	480-1 466 (500-1)	540-1 526 (600-1)	580-1½ 566 (600-1½)	NA

MIRL Rwy 4-22, 10-28 and 16-34 0

SE-3, 14 MAY 2026 to 11 JUN 2026

SE-3, 14 MAY 2026 to 11 JUN 2026