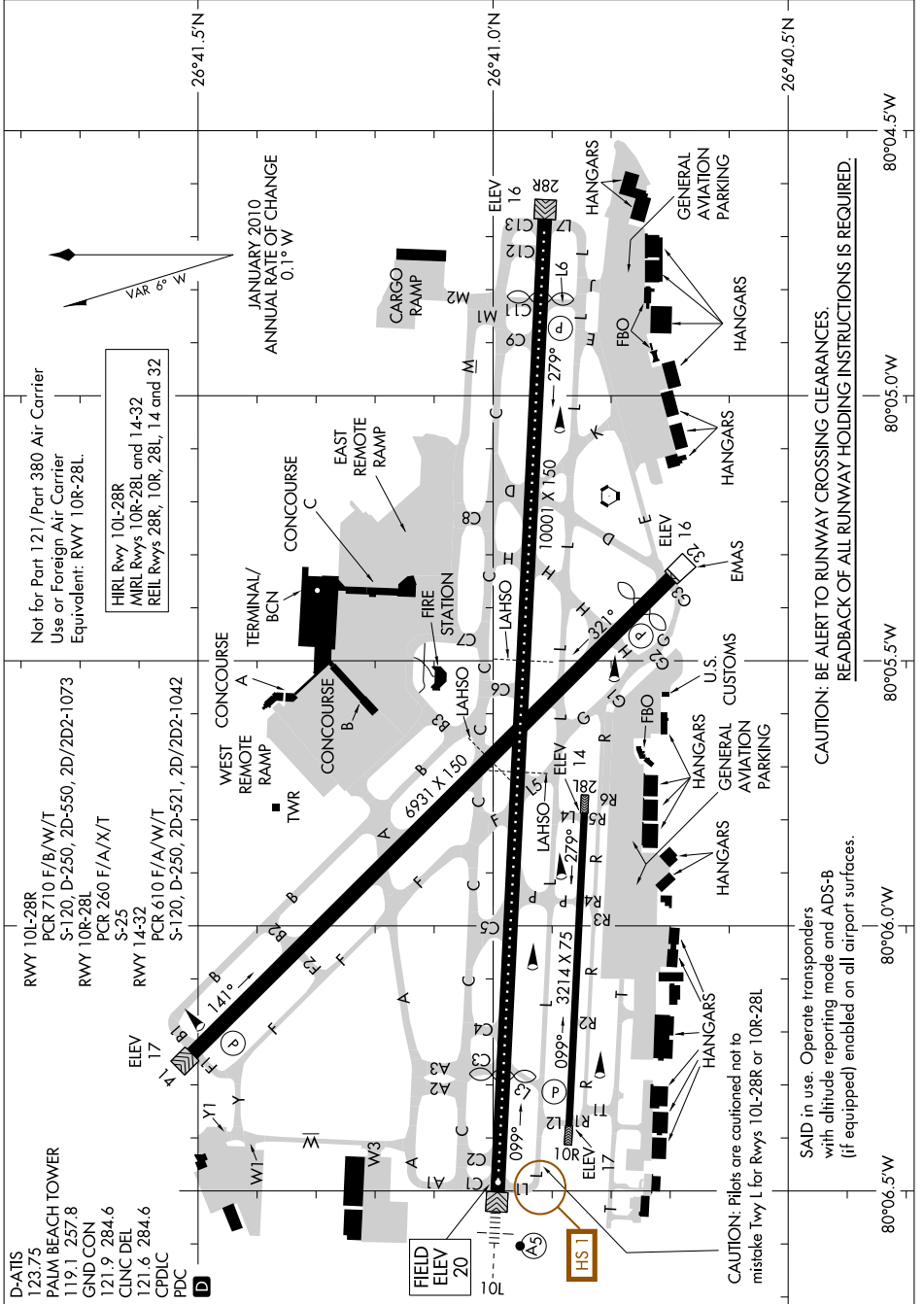


# AIRPORT DIAGRAM

AL-449 (FAA)

PALM BEACH INTL (PBI)  
WEST PALM BEACH, FLORIDA

SE-3, 14 MAY 2026 to 11 JUN 2026



# AIRPORT DIAGRAM

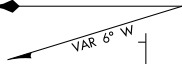
WEST PALM BEACH, FLORIDA  
PALM BEACH INTL (PBI)

SE-3, 14 MAY 2026 to 11 JUN 2026

Not for Part 121/Part 380 Air Carrier  
Use or Foreign Air Carrier  
Equivalent: RWY 10R-28L.

HIRL Rwy 10L-28R  
MIRL Rwys 10R-28L and 14-32  
REIL Rwys 28R, 10R, 28L, 14 and 32

JANUARY 2010  
ANNUAL RATE OF CHANGE  
0.1° W



CAUTION: Pilots are cautioned not to mistake Twy L for Rws 10L-28R or 10R-28L  
SAID in use. Operate transponders with altitude reporting mode and ADS-B (if equipped) enabled on all airport surfaces.

CAUTION: BE ALERT TO RUNWAY CROSSING CLEARANCES.  
REBACK OF ALL RUNWAY HOLDING INSTRUCTIONS IS REQUIRED.

80°06.5'W 80°06.0'W 80°05.5'W 80°05.0'W 80°04.5'W