

LOC I-PWB <b>111.9</b>	APP CRS <b>279°</b>	Rwy Ldg TDZE Apt Elev	<b>8240</b> <b>18</b> <b>20</b>
---------------------------	------------------------	-----------------------------	---------------------------------------

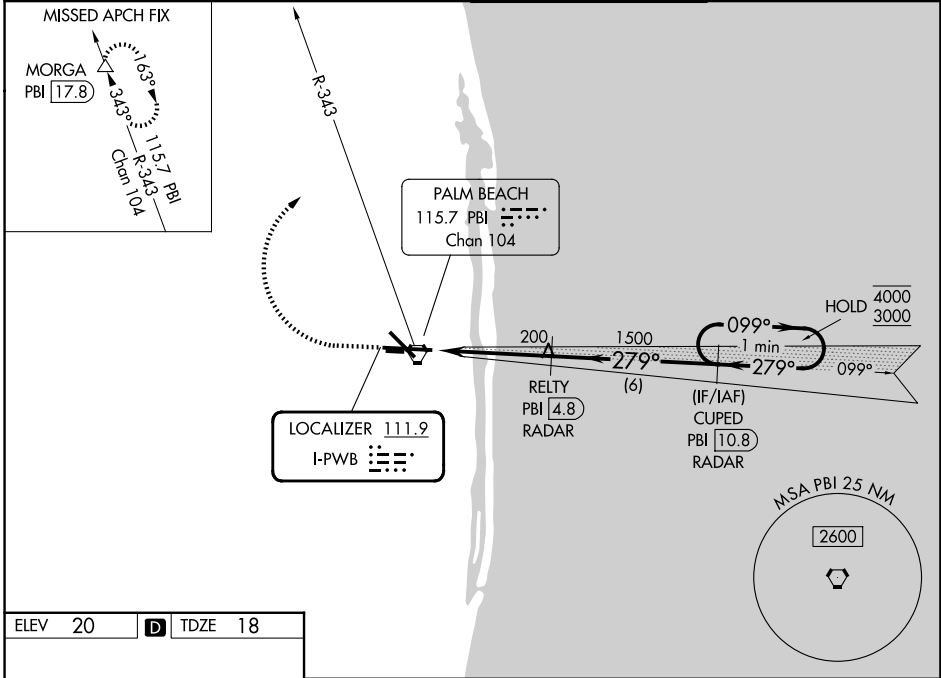
# ILS or LOC RWY 28R

PALM BEACH INTL (PBI)

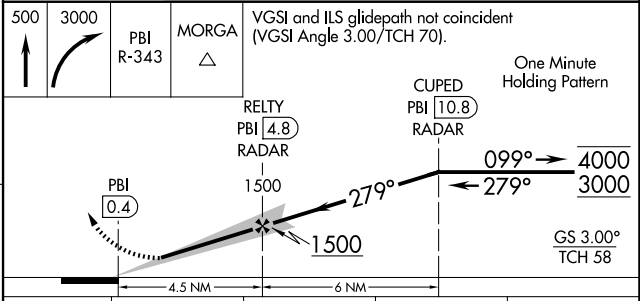
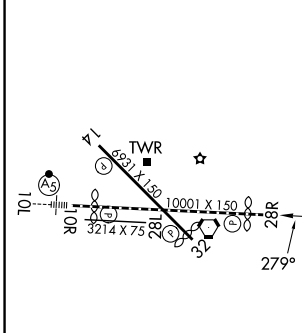
DME required. RADAR required for procedure entry.

**MISSED APPROACH:** Climb to 500 then climbing right turn to 3000 on PBI VORTAC R-343 to MORGA/PBI 17.8 DME and hold.

D-ATIS <b>123.75</b>	PALM BEACH APP CON <b>128.3 317.4</b>	PALM BEACH TOWER <b>119.1 257.8</b>	GND CON <b>121.9 284.6</b>
-------------------------	--	--	-------------------------------



ELEV 20	<b>D</b>	TDZE 18
---------	----------	---------



CATEGORY	A	B	C	D
S-ILS 28R	218/40 200 (200-¾)			
S-LOC 28R	460/55	442 (500-1)	460-1¾	442 (500-1¾)
CIRCLING	560-1	540 (600-1)	740-2 720 (800-2)	780-2½ 760 (800-2½)

WEST PALM BEACH, FLORIDA  
Amdt 4A 01DEC22

26°41'N-80°06'W

# PALM BEACH INTL (PBI)

## ILS or LOC RWY 28R

SE-3, 14 MAY 2026 to 11 JUN 2026

SE-3, 14 MAY 2026 to 11 JUN 2026