

RNAV 1 - DME/DME/IRU or GPS.  
RADAR required.

**TOP ALTITUDE:**  
**11000**

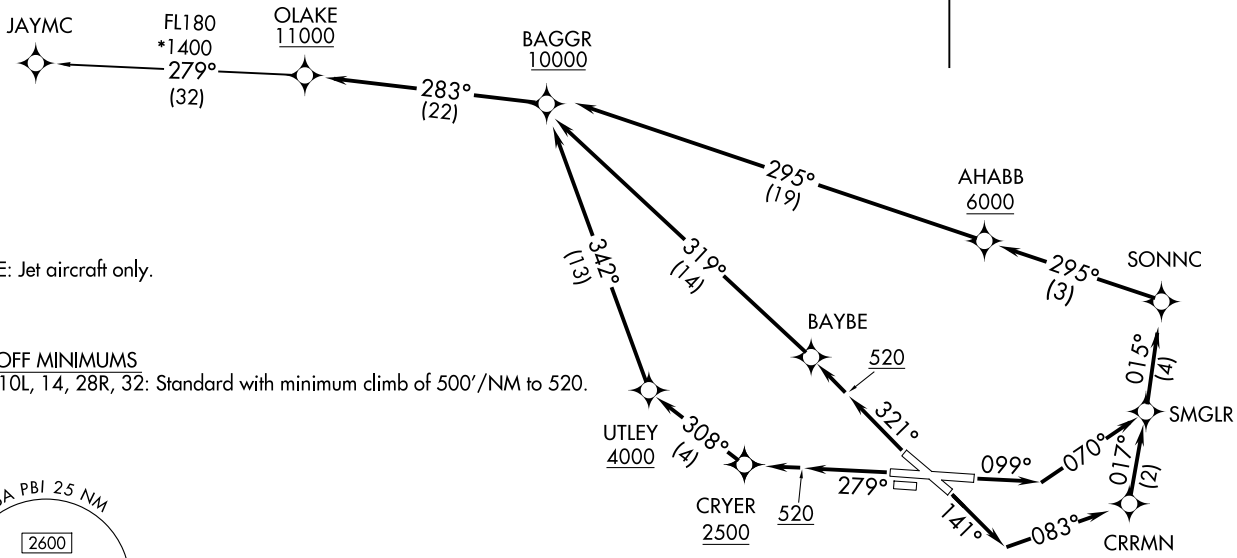
PALM BEACH DEP CON  
128.3 317.4  
D-ATIS  
123.75  
CLNC DEL  
121.6 284.6  
CPDLC  
GND CON  
121.9 284.6  
PALM BEACH TOWER  
119.1 257.8

OLAKE THREE DEPARTURE (RNAV)  
(OLAKES.OLAKE) 221AN26

(OLAKES.OLAKE) 26022  
OLAKE THREE DEPARTURE (RNAV)

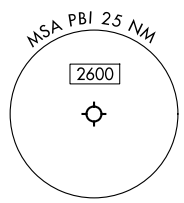
AL-449 (FAA)

PALM BEACH INTL (PBI)  
WEST PALM BEACH, FLORIDA



NOTE: Jet aircraft only.

TAKEOFF MINIMUMS  
Rwys 10L, 14, 28R, 32: Standard with minimum climb of 500'/NM to 520.



WEST PALM BEACH, FLORIDA  
PALM BEACH INTL (PBI)

(CONTINUED ON FOLLOWING PAGE)

NOTE: Chart not to scale.

# OLAKE THREE DEPARTURE (RNAV)



## DEPARTURE ROUTE DESCRIPTION

TAKEOFF RUNWAY 10L: Climb on heading 099° to intercept course 070° to SMGLR, then on track 015° to SONNC, then on track 295° to cross AHABB at or above 6000, then on track 295° to cross BAGGR at or above 10000, thence ...

TAKEOFF RUNWAY 14: Climb on heading 141° to intercept course 083° to CRRMN, then on track 017° to cross SMGLR, then on track 015° to SONNC, then on track 295° to cross AHABB at or above 6000, then on track 295° to cross BAGGR at or above 10000, thence ...

TAKEOFF RUNWAY 28R: Climb on heading 279° to 520, then direct CRYER, cross CRYER at or above 2500, then on track 308° to cross UTLEY at or above 4000, then on track 342° to cross BAGGR at or above 10000, thence ...

TAKEOFF RUNWAY 32: Climb on heading 321° to 520, then direct BAYBE, then on track 319° to cross BAGGR at or above 10000, thence ...

...on track 283° to cross OLAKE at or above 11000, then on transition.  
Maintain 11000, expect filed altitude 10 minutes after departure.

ALL AIRCRAFT: Climb gradients: If unable to accept climb rate advise ATC prior to departure. Runways 10L, 14, 28R, 32: 500'/NM to 520.

JAYMC TRANSITION (OLAKE3.JAYMC)

SE-3, 14 MAY 2026 to 11 JUN 2026

SE-3, 14 MAY 2026 to 11 JUN 2026