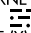


(STOOP.STOOP3) 26078  
**STOOP THREE ARRIVAL**

AL-449 (FAA)

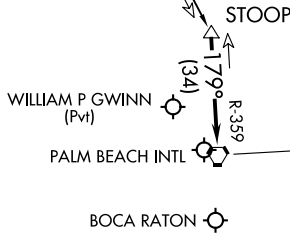
WEST PALM BEACH, FLORIDA

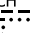
PALM BEACH APP CON  
 124.6 317.4  
 BCT D-ATIS  
 121.125  
 PBI D-ATIS  
 123.75

MELBOURNE  
 115.85 MLB   
 Chan 105 (Y)

\*16000  
 16000  
 R-159  
 (58)

NOTE: Jet aircraft only.  
 NOTE: DME required.  
 NOTE: RADAR required.



PALM BEACH  
 115.7 PBI   
 Chan 104

6000

Ldg KPBI/KBCT/06FA

NOTE: Chart not to scale.

**ARRIVAL ROUTE DESCRIPTION**

MELBOURNE TRANSITION (MLB.STOOP3): From over MLB VOR/DME on MLB R-159 to STOOP.

LANDING ALL AIRPORTS: From STOOP on PALM BEACH VORTAC (PBI) R-359 to cross PBI VORTAC at 6000. Expect RADAR vectors.

**STOOP THREE ARRIVAL**  
 (STOOP.STOOP3) 19MAY22

WEST PALM BEACH, FLORIDA

SE-3, 14 MAY 2026 to 11 JUN 2026

SE-3, 14 MAY 2026 to 11 JUN 2026