

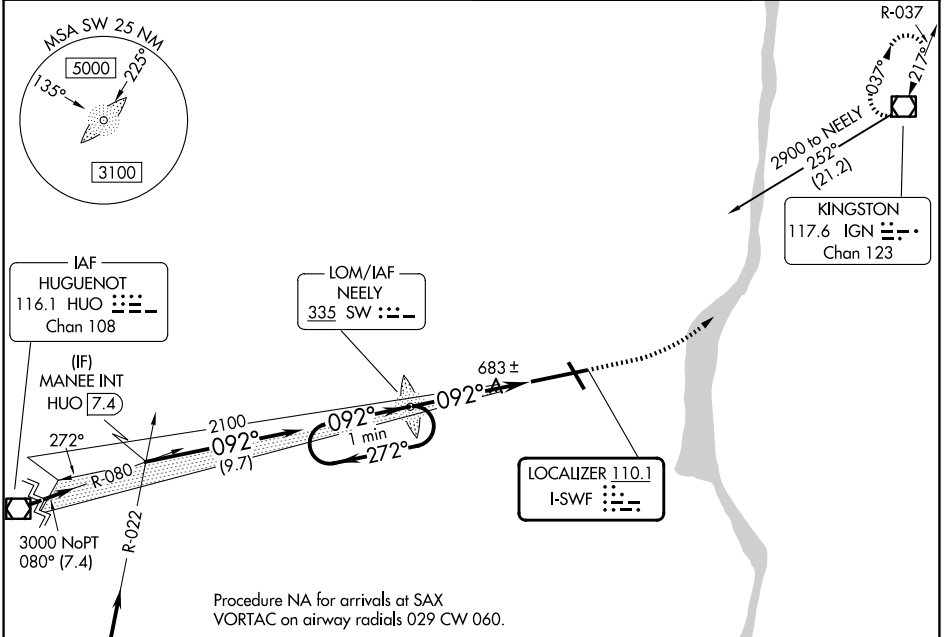
LOC I-SWF <b>110.1</b>	APP CRS <b>092°</b>	Rwy Ldg TDZE Apt Elev	<b>8817</b> <b>482</b> <b>491</b>
---------------------------	------------------------	-----------------------------	---

# ILS RWY 9 (SA CAT I)

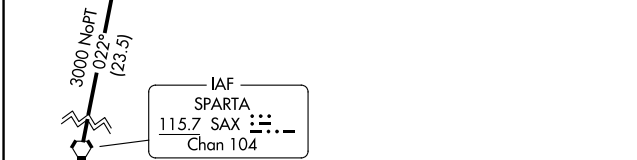
## NEW YORK STEWART INTL (SWF)

Requires specific OPSPEC, MSPEC, or LOA approval and use of HUD to DH.	ALSIF-2 	MISSED APPROACH: Climb to 1200 then climbing left turn to 3000 direct IGN VOR/DME and hold.

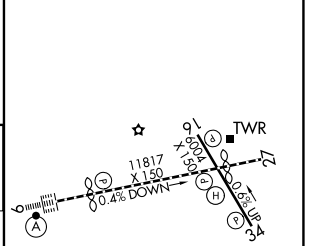
ATIS <b>124.575</b>	NEW YORK APP CON <b>132.75 363.1</b>	STEWART TOWER <b>121.0 254.4</b>	GND CON <b>121.9</b>
------------------------	---	-------------------------------------	-------------------------



Procedure NA for arrivals at SAX  
VORTAC on airway radials 029 CW 060.



ELEV 491	<b>D</b>	TDZE 482
----------	----------	----------



One Minute Holding Pattern	SW LOM 2096	1200	3000	IGN
2300 ← 272°	2100	↑	↻	
→ 092°	↘ 092°	VGSi and ILS glidepath not coincident (VGSi Angle 3.00/TCH 65).		
GS 3.00° TCH 60		4.8 NM		
		1249'		

CATEGORY	A	B	C	D
S-ILS 9		RA 142/14	150	DA 632

**SA CATEGORY I ILS - SPECIAL AIRCREW & AIRCRAFT CERTIFICATION REQUIRED**

TDZ/CL Rwy 9  
HIRL Rwys 9-27 and 16-34  
REIL Rwys 16, 27 and 34

NE-2, 14 MAY 2026 to 11 JUN 2026

NE-2, 14 MAY 2026 to 11 JUN 2026