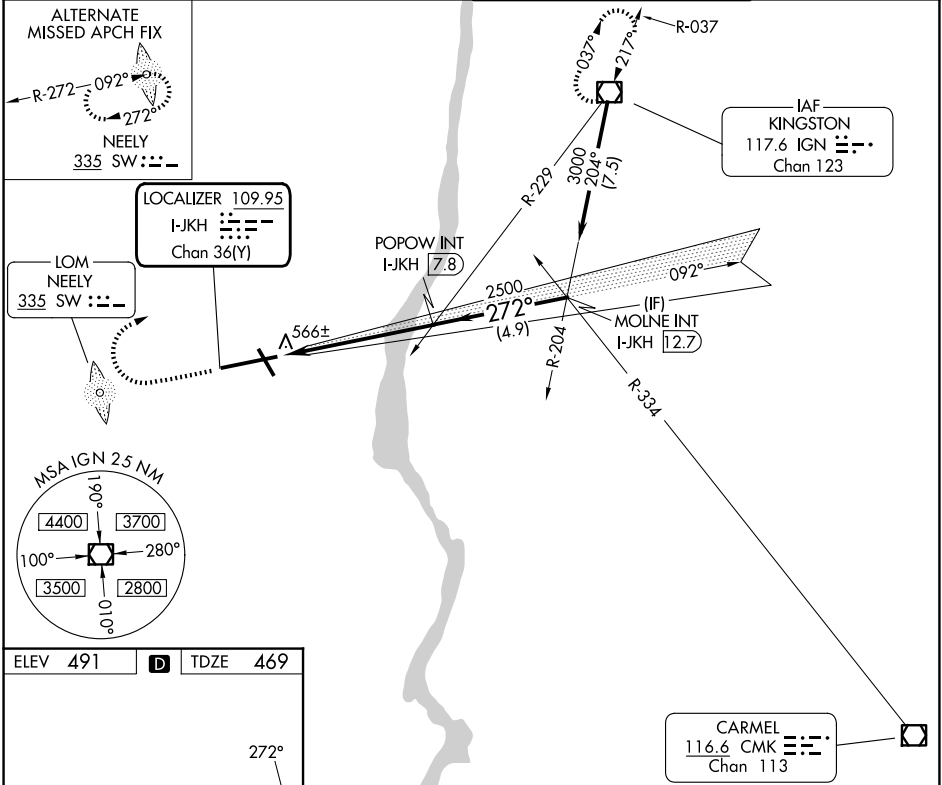


LOC/DME I-JKH <b>109.95</b> Chan 36(Y)	APP CRS <b>272°</b>	Rwy Ldg <b>9817</b> TDZE <b>469</b> Apt Elev <b>491</b>
--	------------------------	---

# ILS or LOC RWY 27

NEW YORK STEWART INTL (SWF)

		MISSED APPROACH: Climb to 1600 then climbing right turn to 3000 direct IGN VOR/DME and hold.	
ATIS <b>124.575</b>	NEW YORK APP CON <b>132.75 363.1</b>	STEWART TOWER <b>121.0 254.4</b>	GND CON <b>121.9</b>



ELEV 491	<b>D</b>	TDZE 469
----------	----------	----------

TDZ/CL Rwy 9  
 HIRL Rwys 9-27 and 16-34  
 REIL Rwys 16, 27 and 34  
 FAF to MAP 6.1 NM

Knots	60	90	120	150	180
Min:Sec	6:06	4:04	3:03	2:26	2:02

	1600	3000	IGN	POPOW INT I-JKH 7.8	MOLNE INT I-JKH 12.7	Procedure Turn NA
* LOC only.				2500	3000	GS 3.00° TCH 55
	I-JKH 1.7	I-JKH 2.8		2500		
	1 NM	5.1 NM	4.9 NM			
CATEGORY	A	B	C	D		
S-ILS 27		719-1	250 (300-1)			
S-LOC 27		840-1	371 (400-1)		840-1¼	371 (400-1¼)
CIRCLING	1200-1	709 (800-1)	1200-2	709 (800-2)	1200-2¼	709 (800-2¼)

NE-2, 14 MAY 2026 to 11 JUN 2026

NE-2, 14 MAY 2026 to 11 JUN 2026