

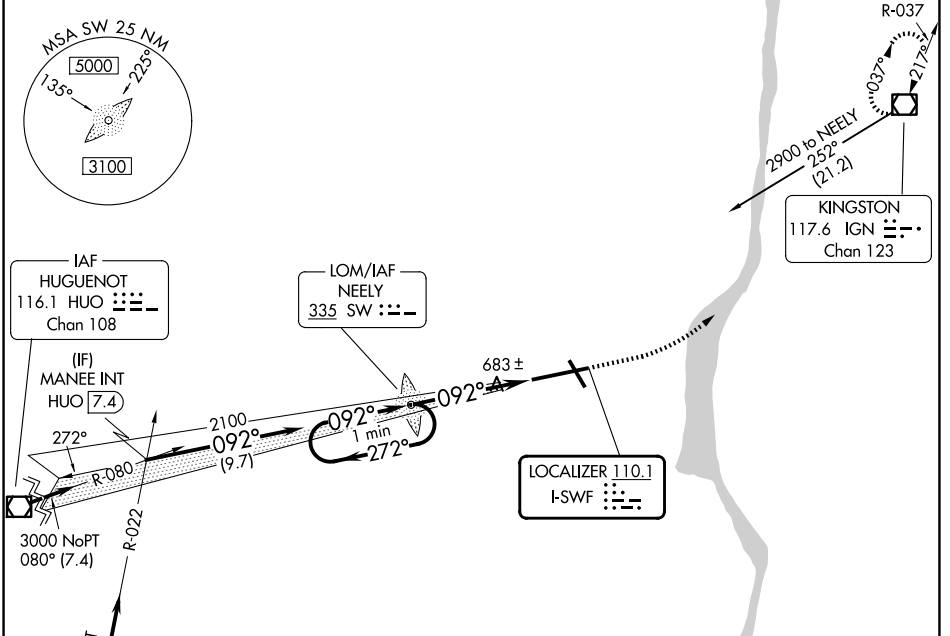
LOC I-SWF 110.1	APP CRS 092°	Rwy Ldg 8817
		TDZE 482
		Apt Elev 491

ILS or LOC RWY 9

NEW YORK STEWART INTL (SWF)

	MISSED APPROACH: Climb to 1200 then climbing left turn to 3000 direct IGN VOR/DME and hold.	
	ATIS 124.575	NEW YORK APP CON 132.75 363.1

STEWART TOWER 121.0 254.4	GND CON 121.9
-------------------------------------	-------------------------



NE-2, 14 MAY 2026 to 11 JUN 2026

NE-2, 14 MAY 2026 to 11 JUN 2026