

(TRESA.TRESA1) 25331

AL-450 (FAA)

NEW YORK, NEW YORK

# TRESA ONE ARRIVAL (RNAV)

RNAV 1 - DME/DME/IRU or GPS.  
RADAR required.

NEW YORK APP CON  
132.75 363.1  
POU ATIS  
126.75  
SWF ATIS  
124.575

JIHUN  
Ldg POU/SWF

NEW YORK  
STEWART  
INTL

ALBANY  
ALB

TRESA

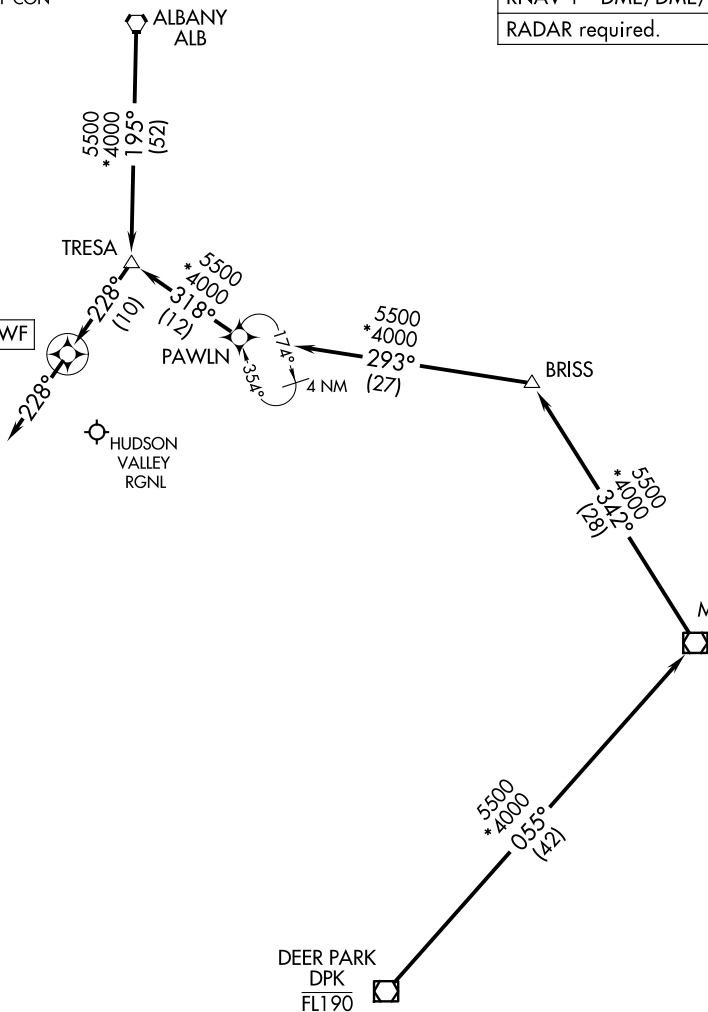
PAWLN

HUDSON  
VALLEY  
RGNL

BRISS

MADISON  
MAD

DEER PARK  
DPK  
FL190



NOTE: Chart not to scale.

## ARRIVAL ROUTE DESCRIPTION

ALBANY TRANSITION (ALB.TRESA1)  
DEER PARK TRANSITION (DPK.TRESA1)

LANDING ALL AIRPORTS: From TRESA on track 228° to JIHUN, then on track 228°. Expect RADAR vectors to final approach course.

TRESA ONE ARRIVAL (RNAV)

NEW YORK, NEW YORK

(TRESA.TRESA1) 27NOV25

NE-2, 14 MAY 2026 to 11 JUN 2026

NE-2, 14 MAY 2026 to 11 JUN 2026