

OAK HARBOR, WASHINGTON

# HI-TACAN Z RWY 25

TACAN NUW Chan <b>85</b>	APCH CRS <b>254°</b>	Rwy Idg TDZE Arprt Elev <b>7999</b> <b>28</b> <b>47</b>
-----------------------------	-------------------------	--

[USN]

WHIDBEY ISLAND NAS (AULT FLD) (KNUW)

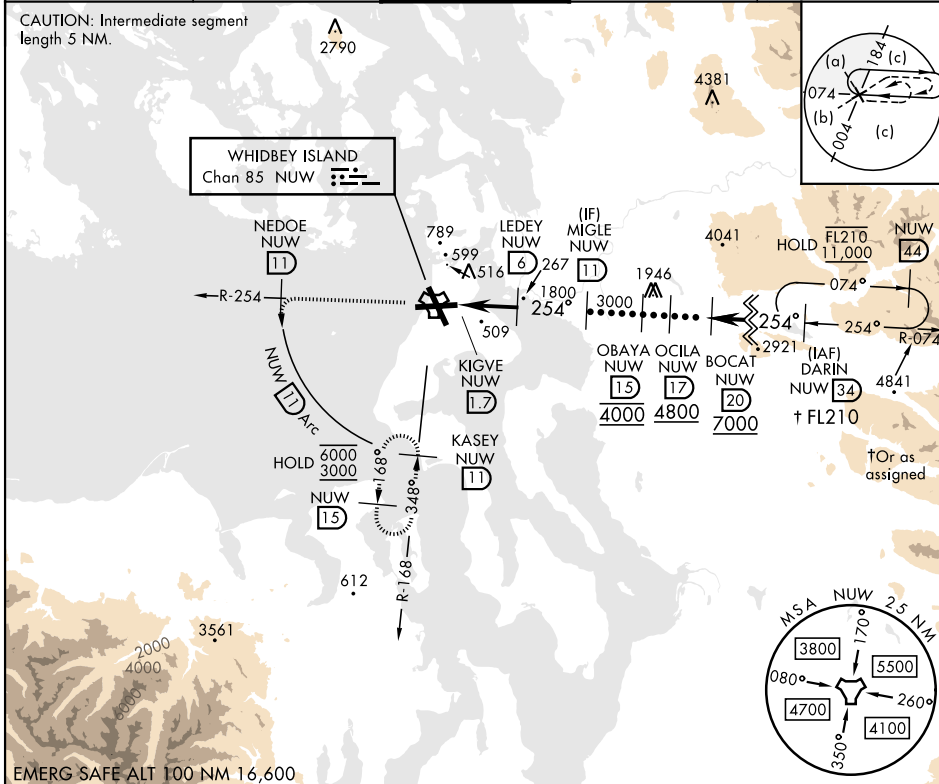
▼ \* When ALS inop, increase CAT CDE vis to 2 miles.



MISSED APPROACH: Climb to 3000 via NUW TACAN R-254 to NEDOE, then arc SW of NUW via 11 DME arc to KASEY and hold.

ATIS <b>134.15 281.5</b>	APP CON <b>120.7 270.8</b> (E) <b>118.2 285.65</b> (W)	TOWER <b>127.9 340.2</b>	GND CON <b>121.75 336.4</b>	ASR/PAR
-----------------------------	--	-----------------------------	--------------------------------	---------

CAUTION: Intermediate segment length 5 NM.

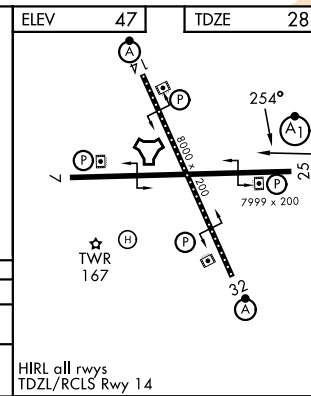


NW-1, 14 MAY 2026 to 11 JUN 2026

NW-1, 14 MAY 2026 to 11 JUN 2026

EMERG SAFE ALT 100 NM 16,600

3000 NUW R-254	NEDOE NUW (11)	NUW (11) Arc	MIGLE NUW (11)
NUW TACAN	KIGVE NUW (1.7)	NUW (3)	LEDEY NUW (6)
4.3 NM			
CATEGORY	C	D	E
S-25*	760-1 $\frac{5}{8}$	732	(800-1 $\frac{5}{8}$ )
CIRCLING	860-2 $\frac{1}{2}$ 813 (900-2 $\frac{1}{2}$ )	900-2 $\frac{3}{4}$ 853 (900-2 $\frac{3}{4}$ )	1200-3 1153 (1200-3)



OAK HARBOR, WASHINGTON

48°21'N-122°39'W

WHIDBEY ISLAND NAS (AULT FLD) (KNUW)

Amdt 5 19FEB26

# HI-TACAN Z RWY 25