

HI-TACAN Z RWY 32

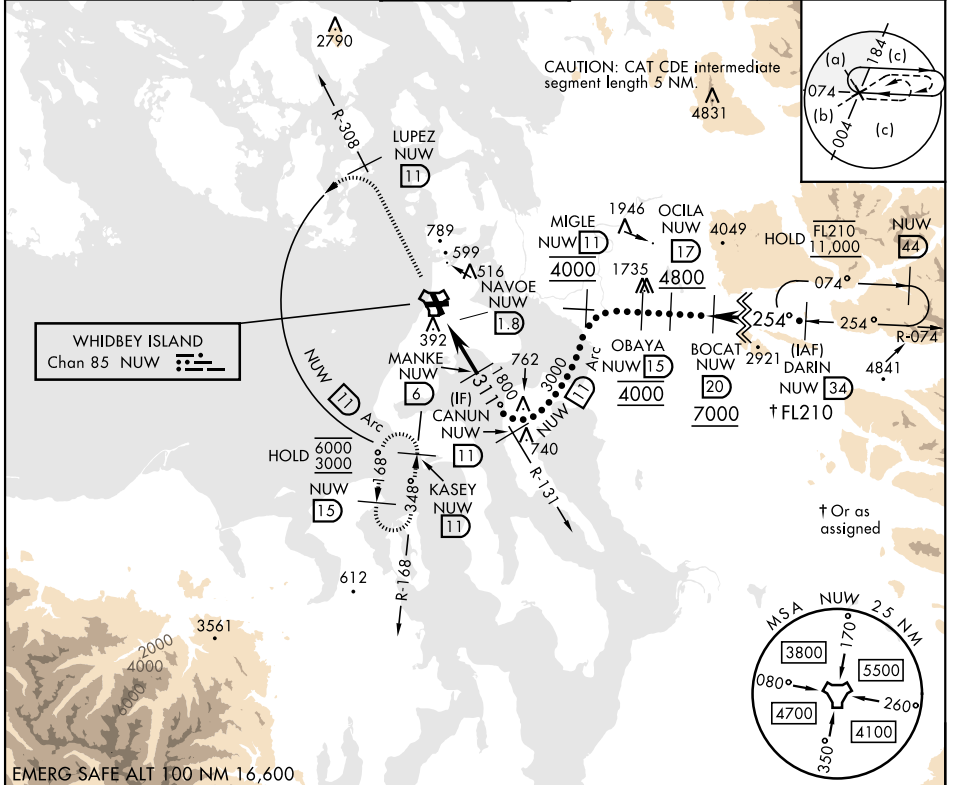
TACAN Chan 85	APCH CRS 311°	Rwy ldg TDZE 47 Arpt Elev 47
-------------------------	-------------------------	--

[USN]

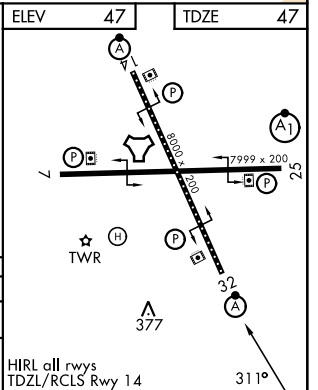
WHIDBEY ISLAND NAS (AULT FLD) (KNUW)

⚠ *When ALS inop, increase CAT CDE vis to 1 3/4 miles.
 ⚠ ALSF-2
 MISSED APPROACH: Climb to 3000 via NUW TACAN R-308 to LUPEZ, then arc W of NUW via 11 DME Arc to KASEY and hold.

ATIS 134.15 281.5	APP CON 120.7 270.8 (E) 118.2 285.65 (W)	TOWER 127.9 340.2	GND CON 121.75 336.4	ASR/PAR
-----------------------------	--	-----------------------------	--------------------------------	---------



3000 NUW R-308 LUPEZ NUW 11 NUW Arc 11	NUW TACAN NUW 2.8 NAVOE NUW 1.8 MANKE NUW 6 CANUN NUW 11	1800 3000	
TCH 38 4.2 NM 3.20°			
CATEGORY	C	D	E
S-32*	680-1 3/8	633 (700-1%)	
CIRCLING	860-2 1/2 813 (900-2 1/2)	900-2 3/4 853 (900-2 3/4)	1200-3 1153 (1200-3)



HI-TACAN Z RWY 32

NW-1, 14 MAY 2026 to 11 JUN 2026

NW-1, 14 MAY 2026 to 11 JUN 2026