

OAK HARBOR, WASHINGTON

RNAV (GPS) RWY 14

| | | | |
|--------------------|---------------|------------------------|------------|
| WAAS CH 50004 W14A | APCH CRS 137° | Rwy ldg TDZE Arpt Elev | 8000 39 47 |
|--------------------|---------------|------------------------|------------|

(USN)

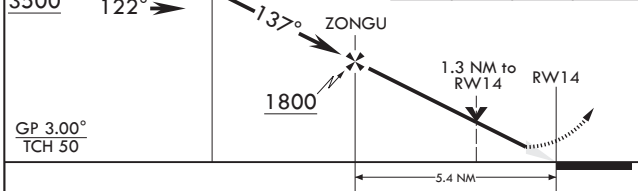
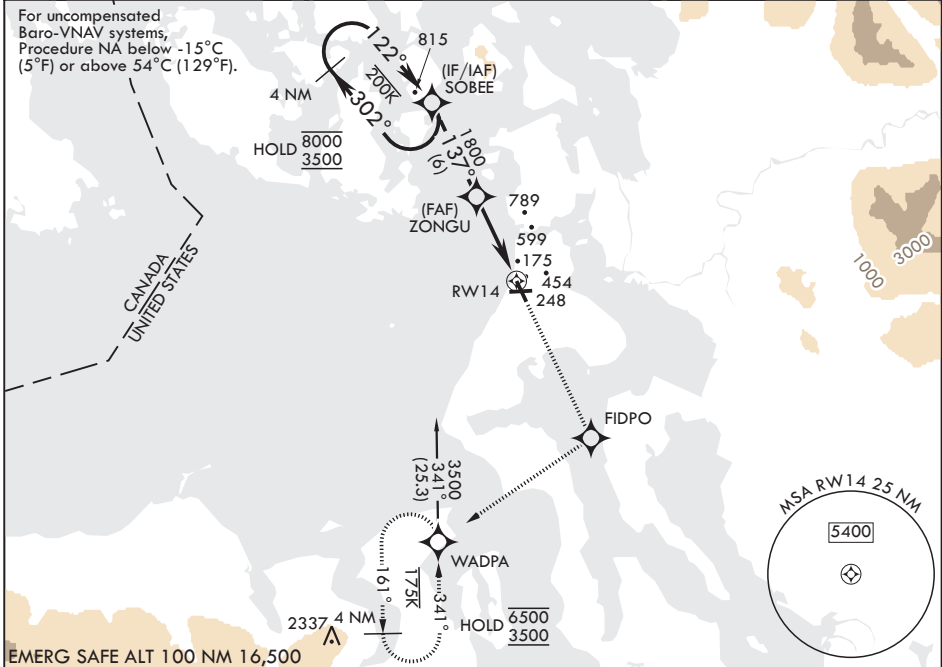
WHIDBEY ISLAND NAS (AULT FLD) (KNUW)

RNP APCH

▼ * When TDZ/CL lights inop, increase RVR to 24. When ALS inop, increase RVR to 40, vis to 3/4 mile.
 ** When ALS inop, increase RVR to 60, vis to 1 1/8 miles.
 *** When ALS inop, increase CAT AB RVR to 55, vis to 1 mile; CAT CDE vis to 1 3/8 miles.

ALSF-2 MISSED APPROACH: Climb to 3500 direct FIDPO, and on track 218° to WADPA and hold. Do not exceed 230K.

| | | | | |
|-------------------|--|-------------------|----------------------|---------|
| ATIS 134.15 281.5 | APP CON/DEP CON 118.2 285.65 (W) 120.7 270.8 (E) | TOWER 127.9 340.2 | GND CON 121.75 336.4 | ASR/PAR |
|-------------------|--|-------------------|----------------------|---------|



| CATEGORY | A | B | C | D | E |
|----------------|--------|---------------|------------------------------|------------------------------|-------------------------|
| LPV DA* | 239/18 | | 200 | (200-1/2) | |
| LNAV/VNAV DA** | 457/40 | | 418 | (500-3/4) | |
| LNAV MDA*** | 500/24 | 461 (500-1/2) | 500/50 | 461 | (500-1) |
| CIRCLING | 760-1 | 713 (800-1) | 860-2 1/2 813 (900-2 1/2) | 900-2 3/4 853 (900-2 3/4) | 1200-3 1153 (1200-3) |

HIRL all rwys TDZL/CL Rwy 14

OAK HARBOR, WASHINGTON

48°21'N - 122°39'W WHIDBEY ISLAND NAS (AULT FLD) (KNUW)

Amdt 5 31OCT24

RNAV (GPS) RWY 14

NW-1, 14 MAY 2026 to 11 JUN 2026

NW-1, 14 MAY 2026 to 11 JUN 2026