

OAK HARBOR, WASHINGTON

RNAV (GPS) RWY 25

WAAS CH 44487 W25A	APCH CRS 249°	Rwy ldg TDZE Arprt Elev	7999 28 47
--------------------------	------------------	-------------------------------	------------------

(USN)

WHIDBEY ISLAND NAS (AULT FLD) (KNUW)

RNP APCH

- * When ALS inop, increase RVR to 40, vis to 3/4 mile.
- ** When ALS inop, increase vis to 1 7/8 miles.
- *** When ALS inop, increase CAT AB RVR to 55, vis to 1 mile; CAT CDE vis to 1 7/8 miles.

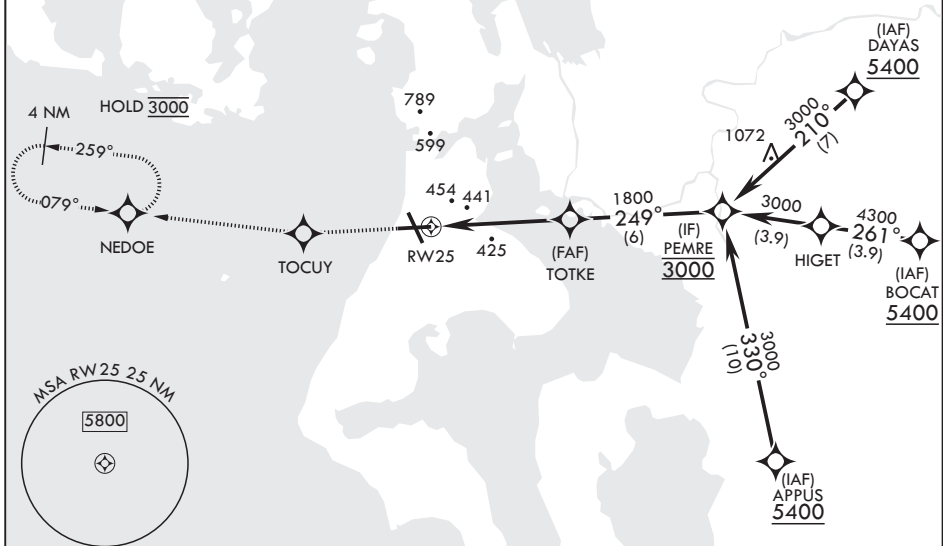
ALSIF-1



MISSED APPROACH: Climb to 3000 direct TOCUY and track 259° to NEDOE and hold.

ATIS 134.15 281.5	APP CON/DEP CON 118.2 285.65 (W) 120.7 270.8 (E)	TOWER 127.9 340.2	GND CON 121.75 336.4	ASR/PAR
----------------------	--	----------------------	-------------------------	---------

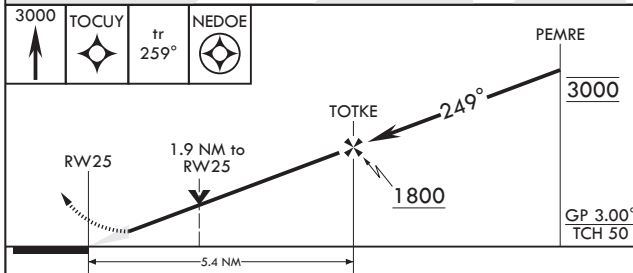
For uncompensated Baro-VNAV systems, Procedure NA below -15°C (5°F) or above 54°C (130°F).



NW-1, 14 MAY 2026 to 11 JUN 2026

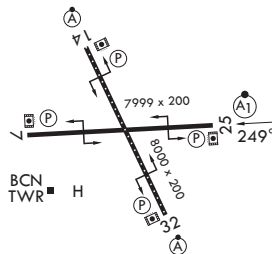
NW-1, 14 MAY 2026 to 11 JUN 2026

EMERG SAFE ALT 100 NM 16,500



ELEV 47

TDZE 28



CATEGORY	A	B	C	D	E
LPV DA*	278/24		250	(300-1/2)	
LNAV/VNAV DA**	685-1 3/8		657	(700-1 1/8)	
LNAV MDA***	680/24	652 (700-1/2)	680-1 3/8	652	(700-1 1/8)
CIRCLING	760-1	713 (800-1)	860-2 1/2 813 (900-2 1/2)	900-2 3/4 853 (900-2 3/4)	1200-3 1153 (1200-3)

HIRL all rwys
TDZL/CL Rwy 14

OAK HARBOR, WASHINGTON

48°21'N - 122°39'W WHIDBEY ISLAND NAS (AULT FLD) (KNUW)

Amdt 3 31OCT24

RNAV (GPS) RWY 25