

OAK HARBOR, WASHINGTON

# RNAV (GPS) RWY 32

APCH CRS 317°	Rwy ldg TDZE Arprt Elev	8000 47 47
------------------	-------------------------------	------------------

(USN)

WHIDBEY ISLAND NAS (AULT FLD) (KNUW)

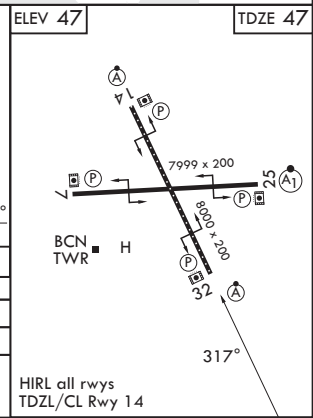
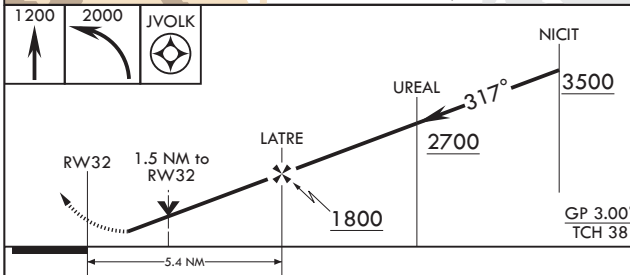
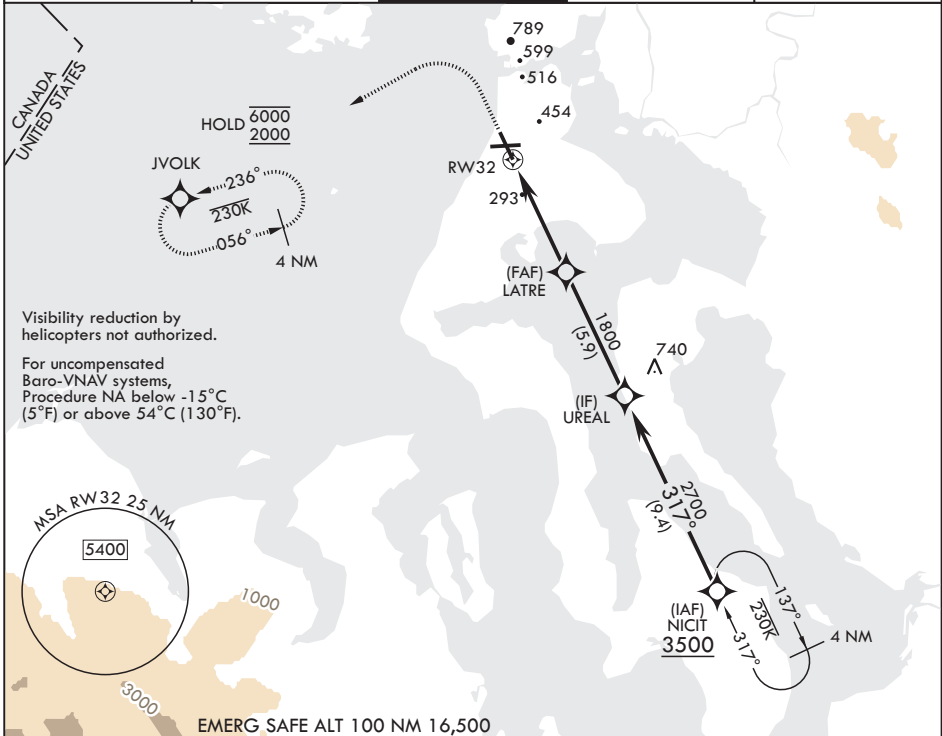
RNP APCH

ALSF-2

MISSED APPROACH: Climb to 1200 then climbing left turn to 2000 direct JVOLK and hold.

▼ \* When ALS inop, increase vis to 1 3/8 miles.  
 \*\* When ALS inop, increase CAT AB RVR to 55, vis to 1 mile; CAT CDE vis to 1 3/8 miles.

ATIS 134.15 281.5	APP CON/DEP CON 118.2 285.65 (W) 120.7 270.8 (E)	TOWER 127.9 340.2	GND CON 121.75 336.4	ASR/PAR
----------------------	--------------------------------------------------------	----------------------	-------------------------	---------



CATEGORY	A	B	C	D	E
LNAV/VNAV DA*	560/55		513	(600-1)	
LNAV MDA**	560/40	513 (600-3/4)	560/55	513	(600-1)
CIRCLING	760-1 713 (800-1)		860-2 1/2 (900-2 1/2)	900-2 3/4 (900-2 3/4)	1200-3 1153 (1200-3)

OAK HARBOR, WASHINGTON

48°21'N - 122°39'W WHIDBEY ISLAND NAS (AULT FLD) (KNUW)

Amdt 3 23JAN25

# RNAV (GPS) RWY 32

NW-1, 14 MAY 2026 to 11 JUN 2026

NW-1, 14 MAY 2026 to 11 JUN 2026