

OAK HARBOR, WASHINGTON

TACAN Y RWY 14

TACAN NUV Chan 85	APCH CRS 141°	Rwy Idg 8000 TDZE 39 Arprt Elev 47
----------------------	------------------	---

[USN]

WHIDBEY ISLAND NAS (AULT FLD) (KNUW)

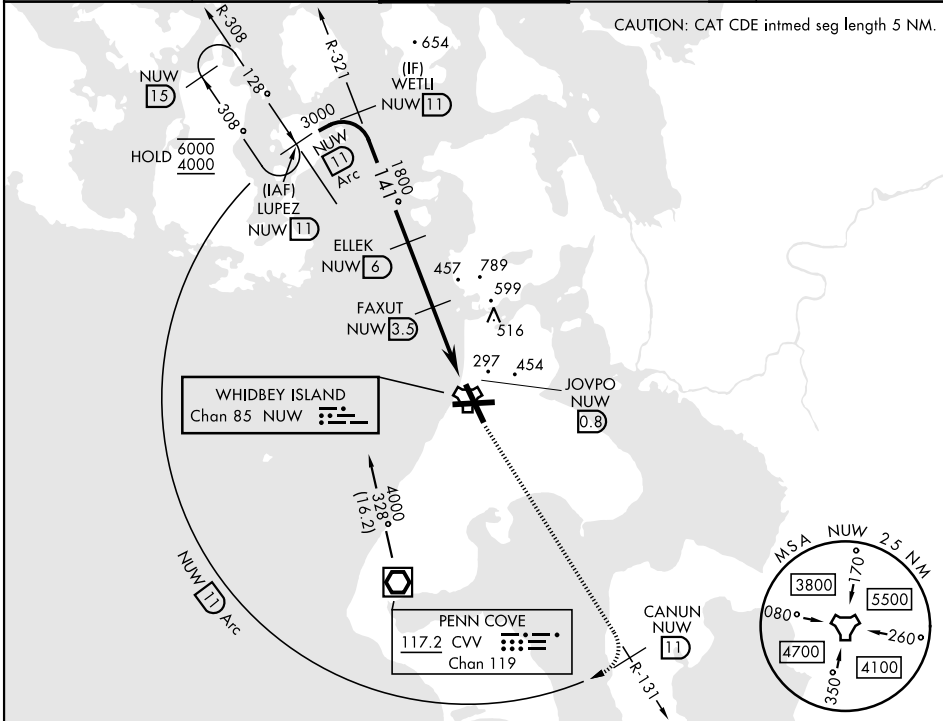
▼ * When ALS inop, increase CAT AB RVR to 55, vis to 1 mile, CAT CDE vis to 1½ miles.



MISSED APPROACH: Climb to 4000 via NUW TACAN R-131 to CANUN, then arc SW of NUW via 11 DME Arc to LUPEZ and hold.

ATIS 134.15 281.5	APP CON 120.7 270.8 (E) 118.2 285.65 (W)	TOWER 127.9 340.2	GND CON 121.75 336.4	ASR/PAR
----------------------	--	----------------------	-------------------------	---------

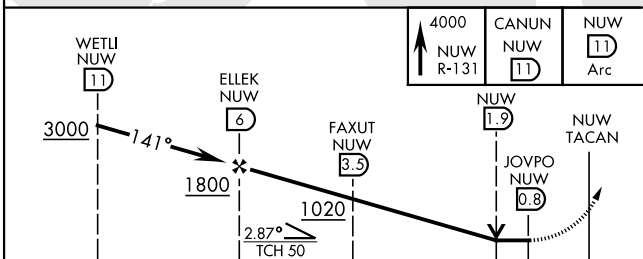
CAUTION: CAT CDE intmed seg length 5 NM.



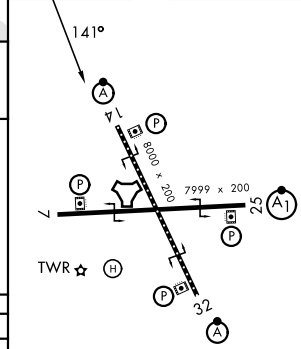
NW-1, 14 MAY 2026 to 11 JUN 2026

NW-1, 14 MAY 2026 to 11 JUN 2026

EMERG SAFE ALT 100 NM 16,600



ELEV	47	TDZE	39
------	----	------	----



CATEGORY	A	B	C	D	E
S-14 *	560/24	521 (600-½)	560/55 521 (600-1)		
CIRCLING	760-1	713 (800-1)	860-2½ 813 (900-2½)	900-2¾ 853 (900-2¾)	1200-3 1153 (1200-3)

HIRL Rwy 7-25, 14-32
TDZL/RCLS Rwy 14

OAK HARBOR, WASHINGTON

48°21'N-122°39'W

WHIDBEY ISLAND NAS (AULT FLD) (KNUW)

Amdt 5 19FEB26

TACAN Y RWY 14