

OAK HARBOR, WASHINGTON

# TACAN Y RWY 25

TACAN NUW Chan 85	APCH CRS 254°	Rwy ldg 7999 TDZE 28 Arprt Elev 47
----------------------	------------------	---

[USN]

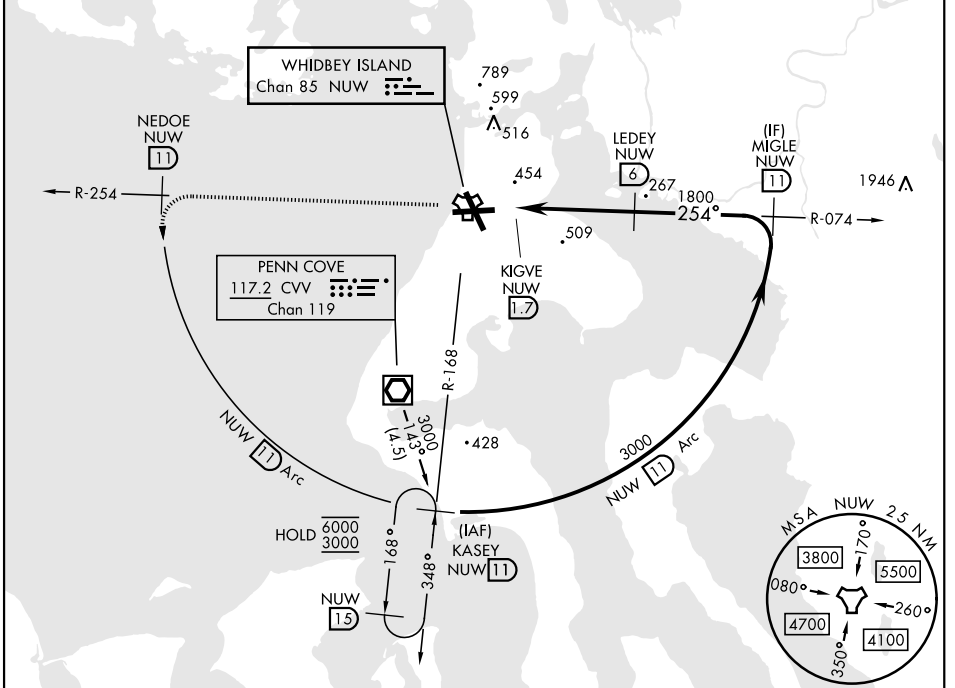
WHIDBEY ISLAND NAS (AULT FLD) (KNUW)

\* When ALS inop, increase CAT AB RVR to 55, vis to 1 mile; CAT CDE vis to 2 miles.

MISSED APPROACH: Climb to 3000 via NUW TACAN R-254 to NEDOE, then arc SW of NUW via 11 DME Arc to KASEY and hold.

ATIS 134.15 281.5	APP CON 120.7 270.8 (E) 118.2 285.65 (W)	TOWER 127.9 340.2	GND CON 121.75 336.4	ASR/PAR
----------------------	--	----------------------	-------------------------	---------

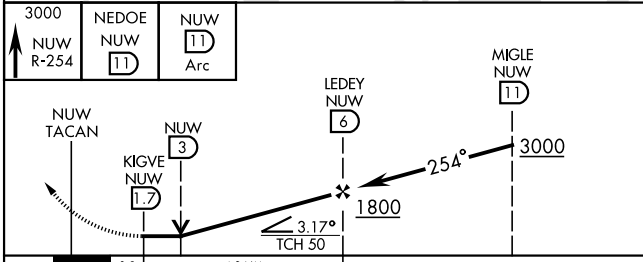
CAUTION: CAT CDE intmed seg length 5 NM.



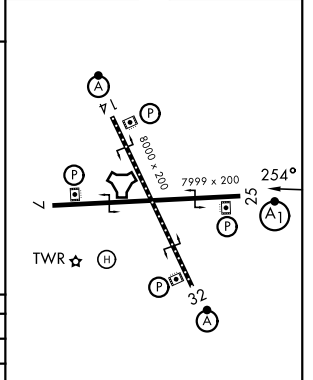
NW-1, 14 MAY 2026 to 11 JUN 2026

NW-1, 14 MAY 2026 to 11 JUN 2026

EMERG SAFE ALT 100 NM 16,600



ELEV	47	TDZE	28
------	----	------	----



CATEGORY	A	B	C	D	E
S-25*	760/30	732 (800-5/8)	760-1 5/8	732 (800-1 5/8)	
CIRCLING	760-1	713 (800-1)	860-2 1/2 813 (900-2 1/2)	900-2 3/4 853 (900-2 3/4)	1200-3 1153 (1200-3)

HIRL Rwy 7-25, 14-32  
TDZL/RCLS Rwy 14

OAK HARBOR, WASHINGTON

48° 21' N-122° 39' W

WHIDBEY ISLAND NAS (AULT FLD) (KNUW)

Amdt 5 19FEB26

# TACAN Y RWY 25