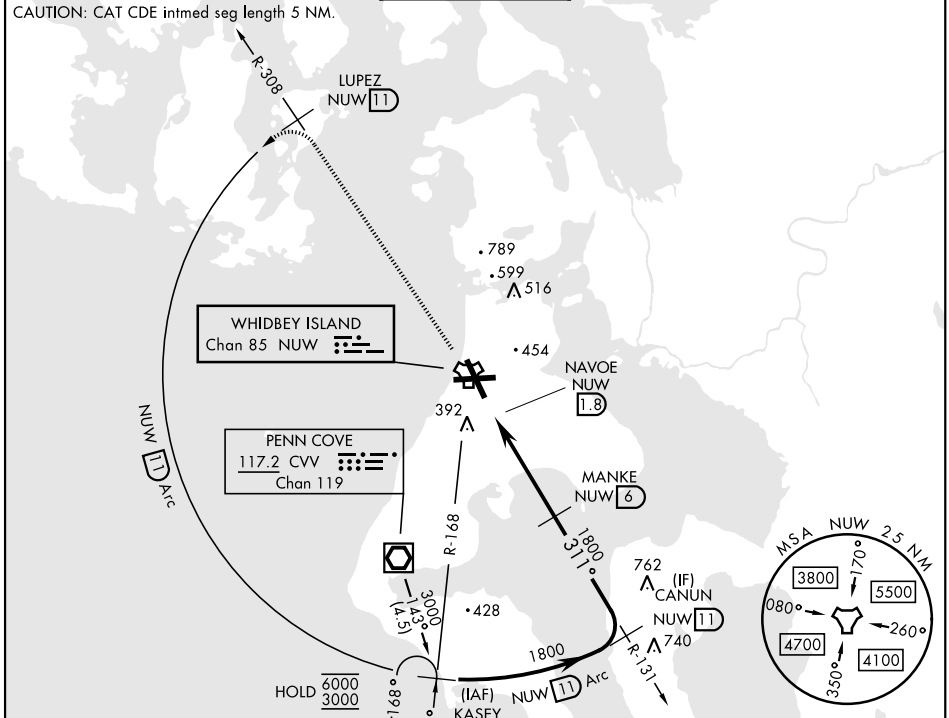


OAK HARBOR, WASHINGTON

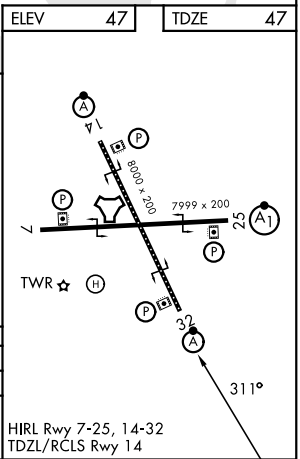
# TACAN Y RWY 32

TACAN NUV Chan <b>85</b>	APCH CRS <b>311°</b>	Rwy ldg TDZE <b>47</b> Arprt Elev <b>47</b>	[USN]	WHIDBEY ISLAND NAS (AULT FLD) (KNUW)
▼ * When ALS inop, increase CAT AB RVR to 55, vis to 1 mile; CAT CDE to 1¾ miles.			ALSF-2 	MISSED APPROACH: Climb to 3000 via NUW TACAN R-308 to LUPEZ, then Arc SW of NUW via 11 DME Arc to KASEY and hold.
ATIS <b>134.15 281.5</b>	APP CON <b>120.7 270.8 (E)</b> <b>118.2 285.65 (W)</b>	TOWER <b>127.9 340.2</b>	GND CON <b>121.75 336.4</b>	ASR/PAR



EMERG SAFE ALT 100 NM 16,600

3000 NUW R-308	LUPEZ NUW 11	NUW 11 Arc			
NUW TACAN	NAVVOE NUW 1.8	MANKE NUW 6	CANUN NUW 11		
4.2 NM 3.20° TCH 38			311° 1800		
CATEGORY	A	B	C	D	E
S-32 *	680/30	633 (700-¾)	680-1⅞	633 (700-1¾)	
CIRCLING	760-1	713 (800-1)	860-2½ 813 (900-2½)	900-2¾ 853 (900-2¾)	1200-3 1153 (1200-3)



OAK HARBOR, WASHINGTON      48° 21' N-122° 39' W      WHIDBEY ISLAND NAS (AULT FLD) (KNUW)

Amdt 5 19FEB26

# TACAN Y RWY 32

NW-1, 14 MAY 2026 to 11 JUN 2026

NW-1, 14 MAY 2026 to 11 JUN 2026