

WICHITA, KANSAS

ILS or LOC RWY 1L

LOC I-IAB 111.1	APCH CRS 008°	Rwy Idg 12,000
		TDZE 1347
		Arprt Elev 1372

(USAF)

MC CONNELL AFB (KIAB)

RADAR or DME required	ALSF-1 	MISSED APPROACH: Climb to 2000 then climbing right turn to 4000, intercept IAB TACAN R-011 to 15 DME (PURKE) and hold. Expect further clearance from ATC.
<p>* When ALS inop, increase RVR to 40 and vis to 3/4 mile.</p> <p>** When ALS inop, increase RVR to 55 and vis to 1 mile.</p> <p>*** Circling not authorized W of Rwy 1L-19R.</p>		

D-ATIS 124.65 269.9	WICHITA APP CON 134.8 269.1	TOWER 127.25 291.775	GND CON 118.0 275.8
-------------------------------	---------------------------------------	--------------------------------	-------------------------------

When Circling to Rwy 19L at night, operational VGSI required, remain on or above VGSI glidepath until threshold.

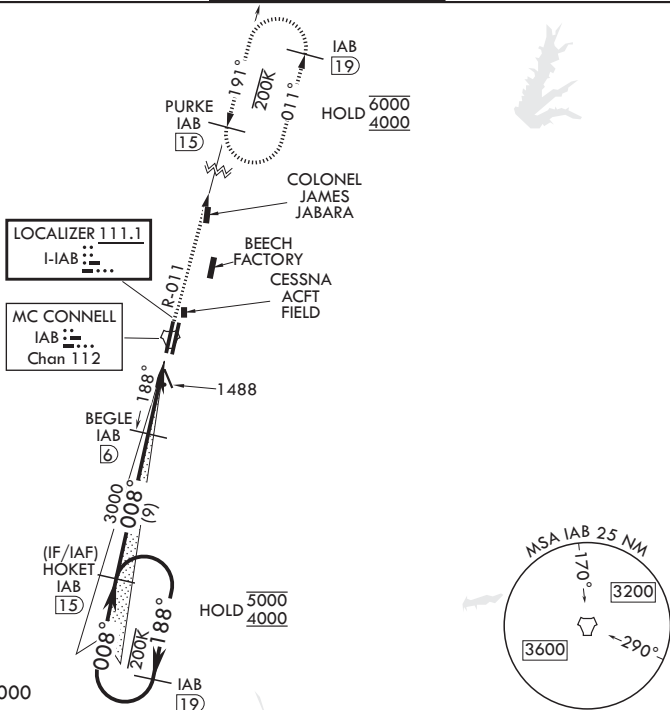
CAUTION: VGSI and ILS TCH are not coincidental.

Practice circling approaches NE of IAB not authorized.

Rwy 1L glideslope unusable for coupled approaches at or below 1533 MSL.

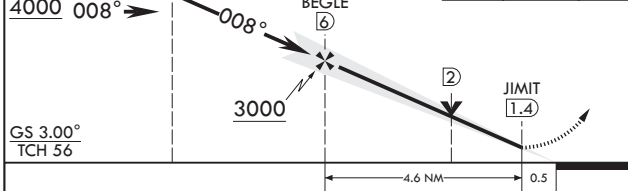
CAUTION: LOC front course unusable beyond 25° left/right of course.

RADAR required for holding above 4000

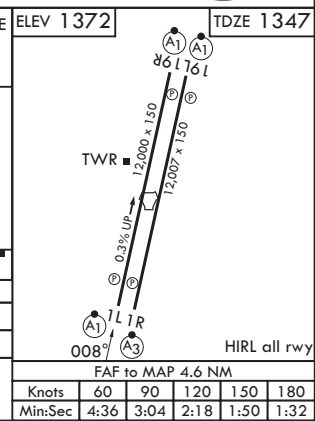


EMERG SAFE ALT 100 NM 4000

HOKET IAB 15	2000	4000	PURKE IAB 15	ELEV 1372	TDZE 1347
--------------	------	------	--------------	-----------	-----------



GS 3.00°	TCH 56				
CATEGORY	A	B	C	D	E
S-ILS 1L*	1547/24		200	(200-½)	
S-LOC 1L**	1740/24	393 (400-½)	1740/35	393	(400-¾)
CIRCLING***	1900-1	528 (600-1)	1940-1½ 568 (600-½)	1940-2 568 (600-2)	2400-3 1028 (1100-3)



WICHITA, KANSAS
Amdt 8 12JUN25

37°37'N - 97°16'W

MC CONNELL AFB (KIAB)

ILS or LOC RWY 1L

NC-2, 14 MAY 2026 to 11 JUN 2026

NC-2, 14 MAY 2026 to 11 JUN 2026