

WICHITA, KANSAS

RNAV (GPS) RWY 19L

APCH CRS 191°	Rwy Idg TDZE Arprt Elev	12,007 1365 1372
-------------------------	-------------------------------	---

(USAF)

MC CONNELL AFB (KIAB)

RNP APCH-GPS	ALSF-1 	MISSED APPROACH: Climb to 2000 then climbing to 4000 direct HEKLO and hold. Expect further clearance from ATC.
<p>▼ * When ALS inop, increase CAT AB RVR to 55, vis to 1 mile; CAT CDE RVR to 60, vis to 1 1/8 miles. ** Circling not authorized W of Rwy 1L-19R.</p>		

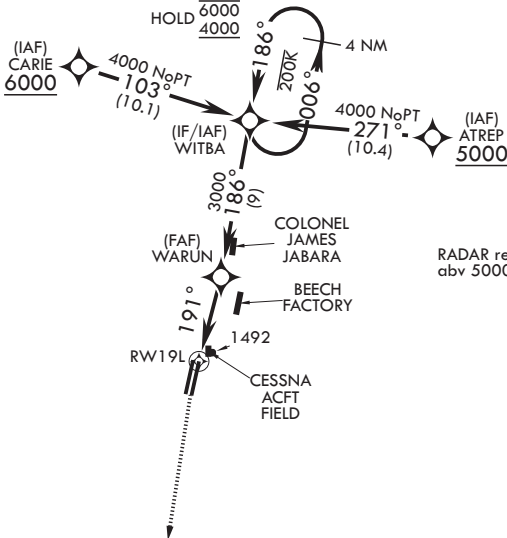
D-ATIS 124.65 269.9	WICHITA APP CON 134.8 269.1	TOWER 127.25 291.775	GND CON 118.0 275.8
-------------------------------	---------------------------------------	--------------------------------	-------------------------------

Terrain 1368 ft MSL
200 ft from threshold,
200 ft right of course.

Rwy 19L helicopter
visibility reduction below
RVR 50 not authorized.

USAF ONLY: When VGSI
Inop, Straight-In Rwy 19L
authorized at night with
aircrew command approval.

Straight-in Rwy 19L at night,
operational VGSI required,
remain on or above VGSI
glidepath until threshold.



RADAR required for holding
abv 5000 or abv 230 KIAS

EMERG SAFE ALT 100 NM 4000

2000	4000	HEKLO	4 NM Holding Pattern		ELEV 1372	TDZE 1365
			WITBA	006° → 6000 ← 186° 4000		
			WARUN	186°		
CATEGORY	A	B	C	D	E	
LNAV MDA*	1760/50		395	(400-1)		
CIRCLING**	1900-1	528 (600-1)	1900-1½ 528 (600-1½)	1940-2 568 (600-2)	2400-3 1028 (1100-3)	HIRL all rwy

WICHITA, KANSAS
Amdt 8 12JUN25

37°37'N - 97°16'W

MC CONNELL AFB (KIAB)

RNAV (GPS) RWY 19L

NC-2, 14 MAY 2026 to 11 JUN 2026

NC-2, 14 MAY 2026 to 11 JUN 2026