

APCH CRS 008°	Rwy Idg TDZE Arpt Elev	12,000 1347 1372
-------------------------	------------------------------	---

(USAF)

MC CONNELL AFB (KIAB)

RNP AR APCH-GPS

▼ * When ALS inop, increase RVR to 60, vis to 1 1/8 miles.
** When ALS inop, increase vis to 1 1/4 miles.

ALS-1

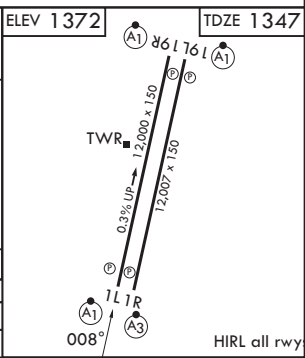
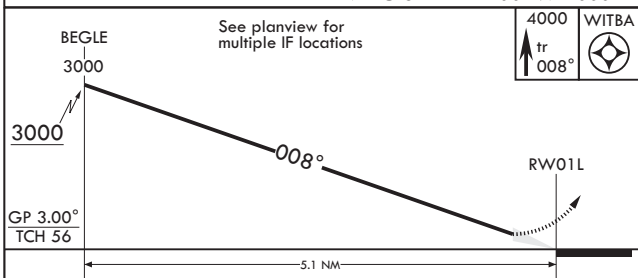
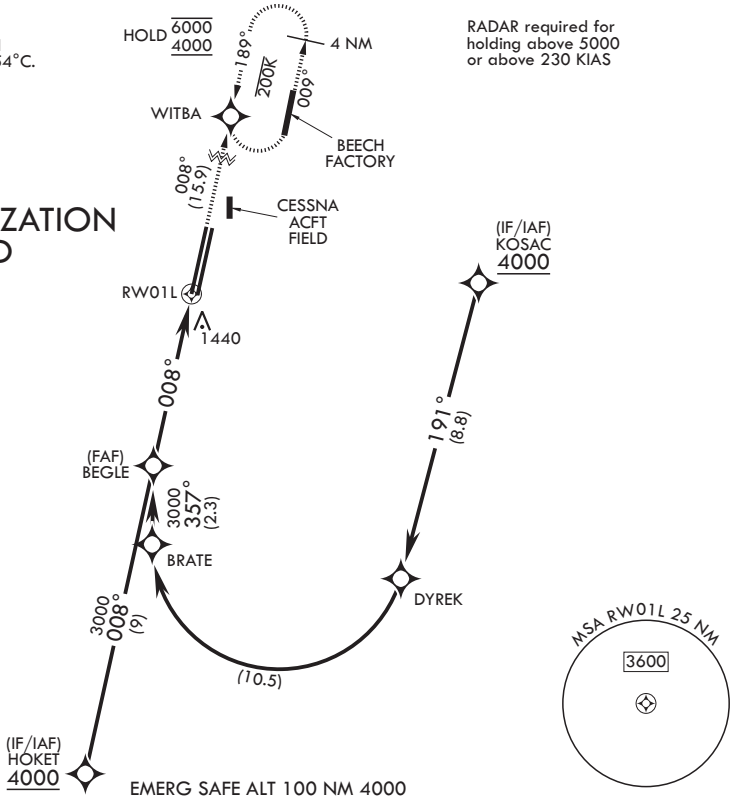
MISSED APPROACH: Climb to 4000 direct WITBA and hold as published. Expect further clearance from ATC.

D-ATIS 124.65 269.9	WICHITA APP CON 134.8 269.1	TOWER 127.25 291.775	GND CON 118.0 275.8
-------------------------------	---------------------------------------	--------------------------------	-------------------------------

For uncompensated Baro-VNAV systems, Procedure not authorized below -17°C. or above 54°C.

RADAR required for holding above 5000 or above 230 KIAS

AUTHORIZATION REQUIRED



CATEGORY	A	B	C	D
RNP 0.10 DA*	1735/35	388	(400-%)	
RNP 0.30 DA**	1787/40	440	(500-%)	

NC-2, 14 MAY 2026 to 11 JUN 2026

NC-2, 14 MAY 2026 to 11 JUN 2026