

WICHITA, KANSAS

RNAV (GPS) Y RWY 19R

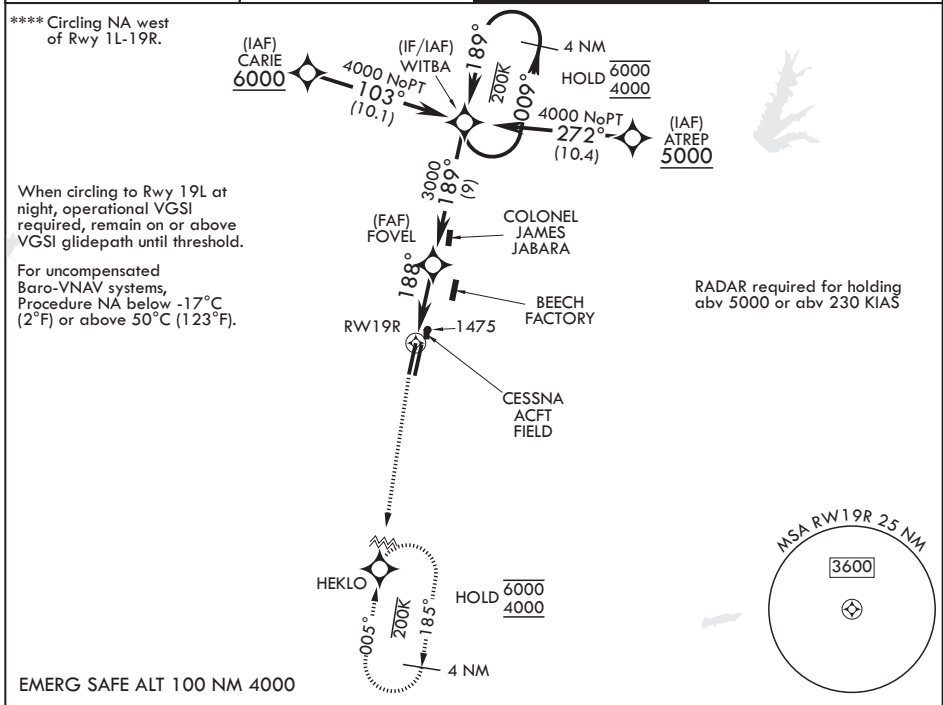
WAAS CH 71277 W19A	APCH CRS 188°	Rwy ldg 12000	TDZE 1372
		Arprt Elev 1372	

(USAF)

MC CONNELL AFB (KIAB)

RNP APCH-GPS	ALSF-1 	MISSED APPROACH: Climb to 2000 then climbing to 4000 direct HEKLO and hold. Expect further clearance from ATC.
<p>▼ * When ALS inop, increase RVR to 40, vis to 3/4 mile. ** When ALS inop increase RVR to 55, vis to 1 mile. *** When ALS inop increase CAT AB RVR to 55, vis to 1 mile. CAT CDE vis to 1 3/8 miles.</p>		

D-ATIS 124.65 269.9	WICHITA APP CON 134.8 269.1	TOWER 127.25 291.775	GND CON 118.0 275.8
------------------------	--------------------------------	-------------------------	------------------------



		ELEV 1372	TDZE 1372		
CATEGORY	A	B	C	D	E
LPV DA*	1572/24		200	(200-1/2)	
LNAV/VNAV DA**	1748/35		376	(400-5/8)	
LNAV MDA***	1820/24	448 (500-1/2)	1820/45	448	(500-3/8)
CIRCLING****	1900-1	528 (600-1)	1900-1 1/2	1940-2	2400-3
			528 (600-1 1/2)	568 (600-2)	1028 (1100-3)

HIRL all rwys

WICHITA, KANSAS
Amdt 7 12JUN25

37°37'N - 97°16'W

MC CONNELL AFB (KIAB)

RNAV (GPS) Y RWY 19R

NC-2, 14 MAY 2026 to 11 JUN 2026

NC-2, 14 MAY 2026 to 11 JUN 2026