

WICHITA, KANSAS

# RNAV (GPS) Y RWY 1L

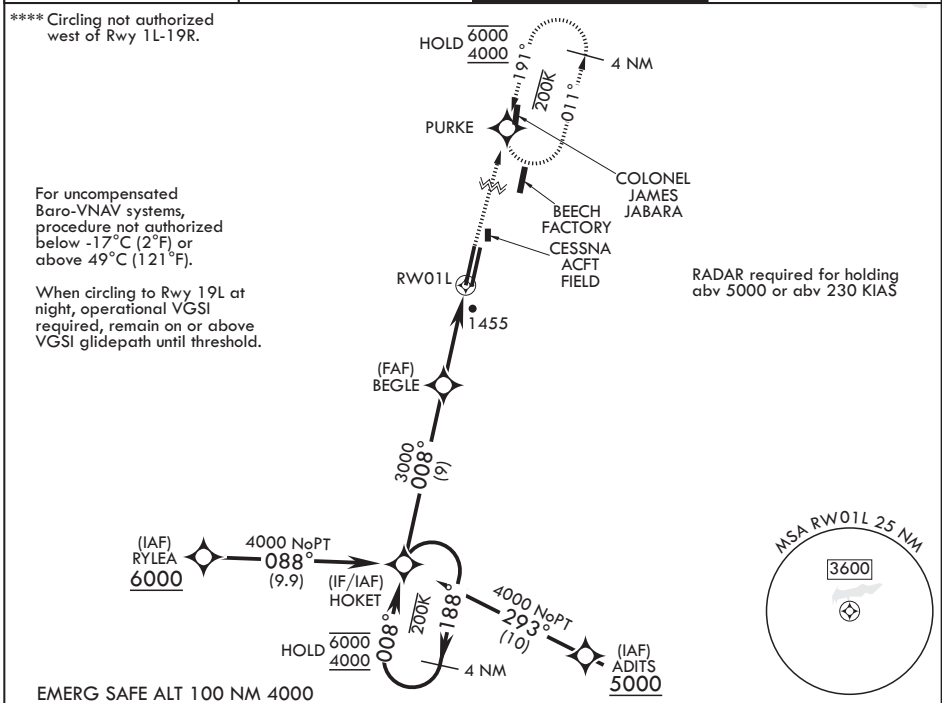
WAAS CH 71272 W01A	APCH CRS 008°	Rwy ldg TDZE Arprt Elev	12,000 1347 1372
--------------------------	------------------	-------------------------------	------------------------

(USAF)

MC CONNELL AFB (KIAB)

RNP APCH-GPS	ALSF-1 	MISSED APPROACH: Climb to 2000 then climbing to 4000, direct PURKE and hold. Expect further clearance from ATC.
<p>▼ * When ALS inop, increase RVR to 40, vis to 3/4 mile.                  ** When ALS inop, increase RVR to 60, vis to 1 1/8 miles.                  *** When ALS inop, increase CAT AB RVR to 55, vis to 1 mile; CAT CDE RVR to 60, vis to 1 1/8 miles.</p>		

D-ATIS 124.65 269.9	WICHITA APP CON 134.8 269.1	TOWER 127.25 291.775	GND CON 118.0 275.8
------------------------	--------------------------------	-------------------------	------------------------



NC-2, 14 MAY 2026 to 11 JUN 2026

NC-2, 14 MAY 2026 to 11 JUN 2026

4 NM Holding Pattern	HOKET	2000	4000	PURKE	ELEV 1372	TDZE 1347
6000 4000	← 188° 008° →	008°	008°	1.2 NM to RWY 1L	RWY 1L	861 761
GP 3.00° TCH 56	3000	5 NM				TWR
						0.3% UP → 12,000 × 150 12,007 × 150
CATEGORY	A	B	C	D	E	
LPV DA*	1547/24		200	(200-½)		
LNAV/VNAV DA**	1742/35		395	(400-¾)		
LNAV MDA***	1760/24	413 (400-½)	1760/40	413 (400-¾)		
CIRCLING****	1900-1	528 (600-1)	1900-1½ 528 (600-1½)	1940-2 568 (600-2)	2400-3 1028 (1100-3)	

WICHITA, KANSAS  
Amdt 6 12JUN25

37°37'N - 97°16'W

MC CONNELL AFB (KIAB)

# RNAV (GPS) Y RWY 1L