

TACAN RWY 19L

TACAN IAB Chan 112	APCH CRS 191°	Rwy Idg 12,007 TDZE 1365 Arprt Elev 1372
------------------------------	-------------------------	---

[USAF]

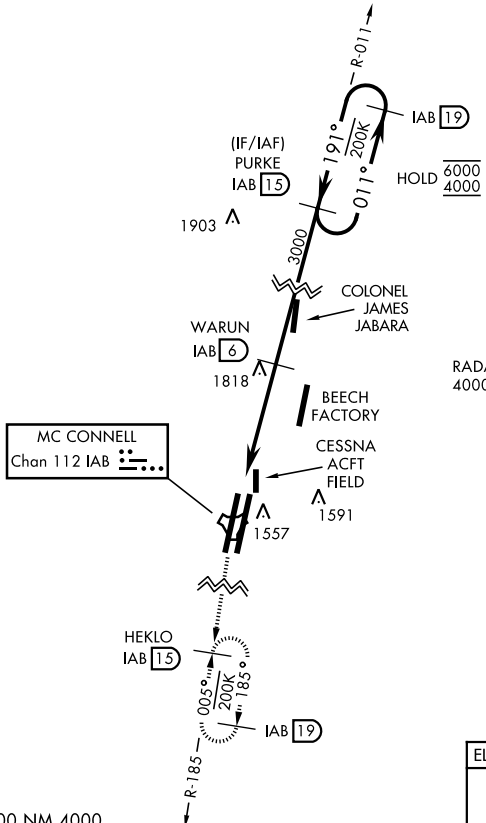
MC CONNELL AFB (KIAB)

▼ * When ALS inop, increase CAT AB RVR to 55 and vis to 1 mile, CAT CDE vis to 1 3/8 miles.
 ** Circling not authorized W of Rwy 1L-19R.

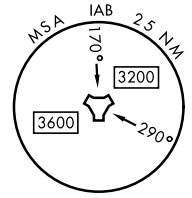


MISSED APPROACH: Climb to 4000 via IAB TACAN R-185 to 15 DME (HEKLO) and hold as published. Expect further clearance from ATC.

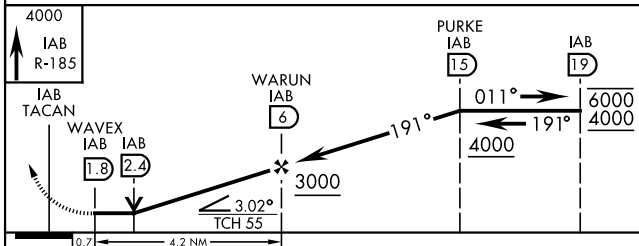
D-ATIS 124.65 269.9	WICHITA APP CON 134.8 269.1	TOWER 127.25 291.775	GND CON 118.0 275.8
-------------------------------	---------------------------------------	--------------------------------	-------------------------------



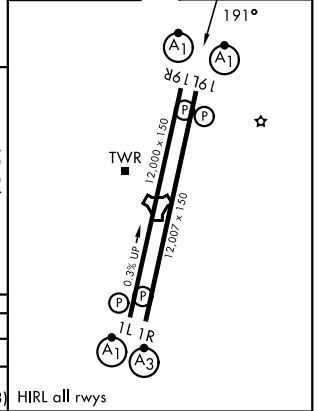
RADAR required for holding above 4000 or greater than 200 KIAS.



EMERG SAFE ALT 100 NM 4000



ELEV 1372	TDZE 1365
-----------	-----------



CATEGORY	A	B	C	D	E
S-19L*	1840/40	475 (500-3/4)	1840/50	475 (500-1)	
CIRCLING**	1900-1	528 (600-1)	1940-1 1/2 568 (600-1 1/2)	1940-2 568 (600-2)	2400-3 1028 (1100-3)

HIRL all rwys

TACAN RWY 19L

NC-2, 14 MAY 2026 to 11 JUN 2026

NC-2, 14 MAY 2026 to 11 JUN 2026