

WICHITA, KANSAS

TACAN RWY 1R

TACAN IAB Chan 112	APCH CRS 005°	Rwy Idg TDZE Arprt Elev	12,007 1347 1372
-----------------------	------------------	-------------------------------	------------------------

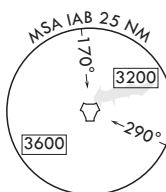
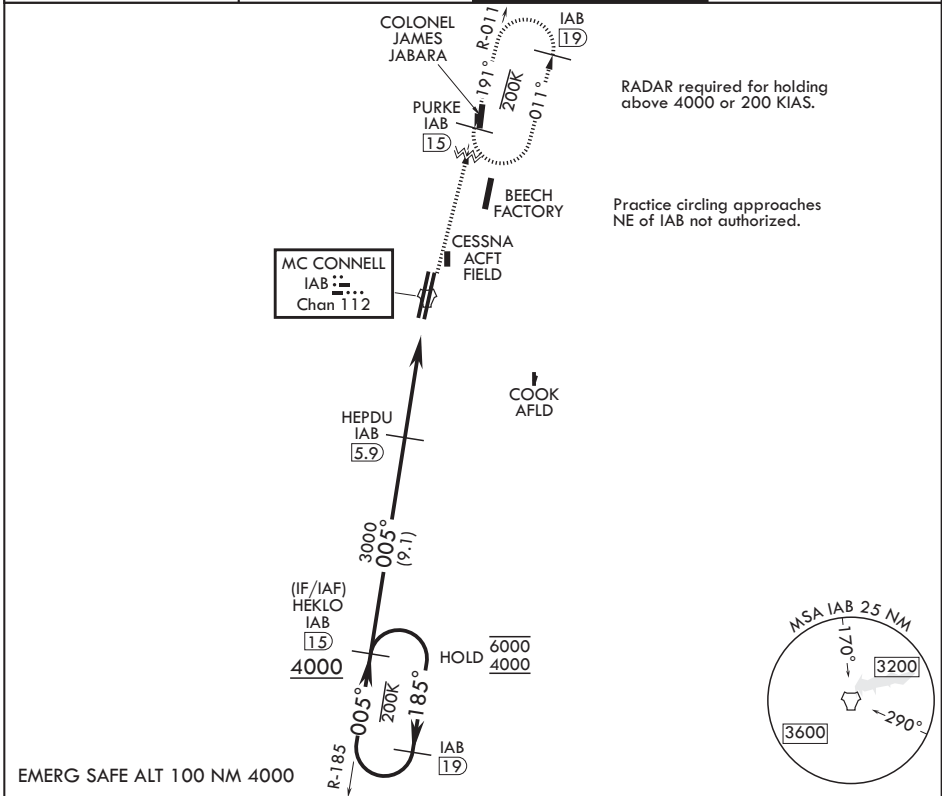
(USAF)

MC CONNELL AFB (KIAB)

▼ *When ALS inop, increase CAT AB RVR to 55 and vis to 1 mile, CAT CDE vis to 1 1/4 miles.
**Circling not authorized W of Rwy 1L-19R.

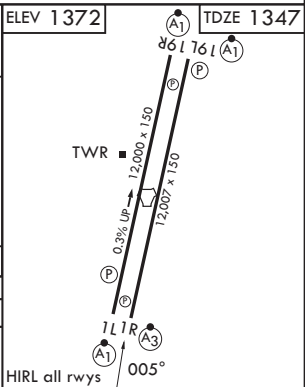
SSALR MISSED APPROACH: Climb to 4000 via IAB TACAN R-011 to 15 DME (PURKE) and hold as published. Expect further clearance from ATC.

D-ATIS 124.65 269.9	WICHITA APP CON 134.8 269.1	TOWER 127.25 291.775	GND CON 118.0 275.8
------------------------	--------------------------------	-------------------------	------------------------



EMERG SAFE ALT 100 NM 4000

<p>HEKLO IAB 15</p> <p>6000 ← 185°</p> <p>4000 → 005°</p> <p>HEPDU IAB 5.9</p> <p>3000</p> <p>3.03° TCH 60</p> <p>4.3 NM</p> <p>WOVIL IAB 1.6</p> <p>TACAN</p> <p>4000 IAB R-011</p> <p>PURKE IAB 15</p> <p>ELEV 1372</p> <p>TDZE 1347</p>		<p>VGSI and descent angles not coincident (VGSI Angle 3.00/TCH 64)</p>			
CATEGORY	A	B	C	D	E
S-1R*	1780/40		433	(500-¾)	
CIRCLING**	1900-1 528 (600-1)	1940-1½ 568 (600-1½)	1940-2 568 (600-2)	2400-3 1028 (1100-3)	



WICHITA, KANSAS
Amdt 7 28DEC23

37°37'N - 97°16'W

MC CONNELL AFB (KIAB)

TACAN RWY 1R

NC-2, 14 MAY 2026 to 11 JUN 2026

NC-2, 14 MAY 2026 to 11 JUN 2026