

WICHITA FALLS, TEXAS

HI-ILS or LOC Z RWY 33L

LOC I-SPS 109.7	APCH CRS 333°	Rwy ldg TDZE Arprt Elev 13,100 1000 1019
---------------------------	-------------------------	--

[USAF]

SHEPPARD AFB/WICHITA FALLS MUNI (KSPS)

DME required

- ▼ * When ALS inop, increase CAT CDE vis to ¾ mile.
- ** When ALS inop, increase CAT CDE vis to 1 mile.
- *** Circling not authorized W of Rwy 15R-33L.

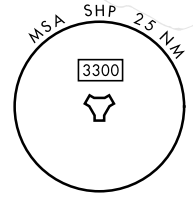
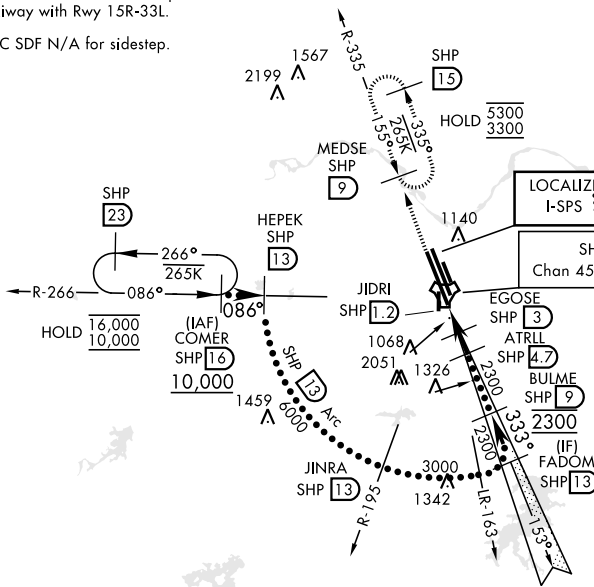
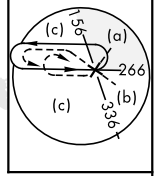


MISSED APPROACH: Climb to 3300 on SHP TACAN R-335 to MEDSE/9 DME and hold, continue climb-in-hold to 3300.

ATIS ★ 132.05 269.9	APP CON 118.2 269.025	TOWER ★ 119.75 0 279.525 (CTAF)	GND CON 125.5 289.4	ASR
-------------------------------	---------------------------------	---	-------------------------------	-----

CAUTION: Do not confuse parallel taxiway with Rwy 15R-33L.

LOC SDF N/A for sidestep.

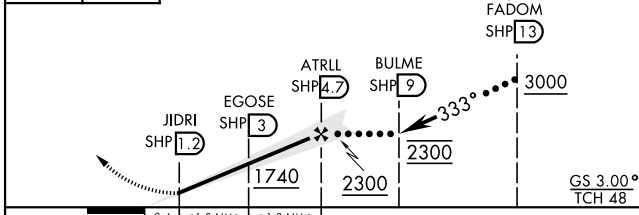


SC-2, 14 MAY 2026 to 11 JUN 2026

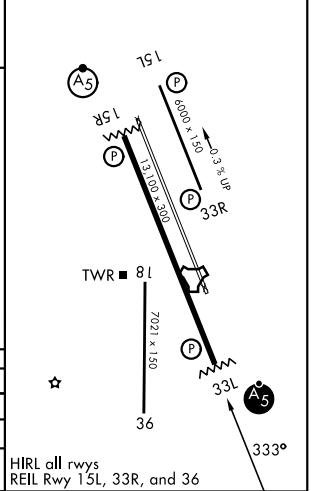
SC-2, 14 MAY 2026 to 11 JUN 2026

EMERG SAFE ALT 100 NM 4600

3300 Intcp SHP R-335	MEDSE SHP 9	VGSI and ILS glidepath not coincident (VGSI Angle 3.00/TCH 56).
----------------------	-------------	---



ELEV	1019	TDZE	1000
------	------	------	------



CATEGORY	C	D	E
S-ILS 33L *	1200-½	200 (200-½)	
S-LOC 33L **	1340-½	340 (400-½)	
CIRCLING ***	1480-1½ 461 (500-1½)	2100-3	1081 (1100-3)

HIRL all rwys
REIL Rwy 15L, 33R, and 36

WICHITA FALLS, TEXAS

33°59'N-98°30'W

SHEPPARD AFB/WICHITA FALLS MUNI (KSPS)

Amdt 9 30OCT25

HI-ILS or LOC Z RWY 33L