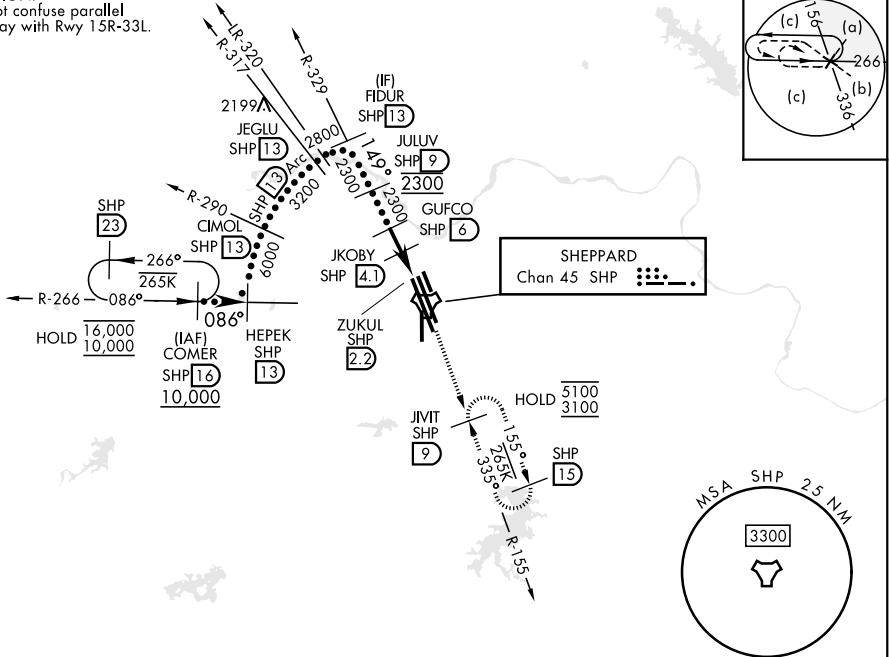
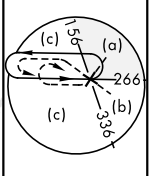


HI-TACAN RWY 15R

TACAN SHP Chan 45	APCH CRS 149°	Rwy ldg 13,100 TDZE: 998 Arprt Elev 1019	[USAF]	SHEPPARD AFB/WICHITA FALLS MUNI	(KSPS)
* When ALS inop, increase CAT CDE vis to 1 1/4 miles. ** Circling not authorized W of Rwy 15R-33L.				MALSR (A5)	MISSED APPROACH: Climb and maintain 3100, intercept SHP TACAN R-155 to SHP R-155/9 DME (JVIT) and hold.

ATIS* 132.05 269.9	APP CON 118.2 269.025	TOWER* 119.75 279.525 (CTAF)	GND CON 125.5 289.4	CLNC DEL 121.2 282.225	ASR
-----------------------	--------------------------	---------------------------------	------------------------	---------------------------	-----

CAUTION:
Do not confuse parallel taxiway with Rwy 15R-33L.

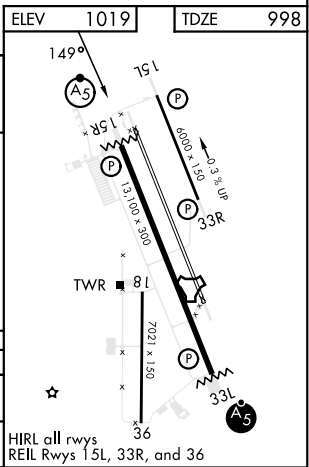


SC-2, 14 MAY 2026 to 11 JUN 2026

SC-2, 14 MAY 2026 to 11 JUN 2026

EMERG SAFE ALT 100 NM 4600

VGSi and descent angle not coincident.			
3100 SHP R-155		JVIT SHP 9	
FIDUR SHP 13 (2800) → JULUV SHP 9 (2300) → GUFCS SHP 6 (2300) → JKOBY SHP 4.1 (1620) → ZUKUL SHP 2.2 (1620) → SHP TACAN			
1.9 NM		1.9 NM	
0.8		0.8	
CATEGORY	C	D	E
S-15R*	1420-3/4	422 (500-3/4)	
CIRCLING**	1480-1 1/2 (500-1 1/2)	2100-3	1081 (1100-3)



HI-TACAN RWY 15R