

WICHITA FALLS, TEXAS

ILS or LOC Y RWY 33L

LOC/DME I-SPS 109.7 Chan 34	APCH CRS 333°	Rwy Idg 13,100 TDZE 1000 Arprt Elev 1019
---	-------------------------	---

[USAF]

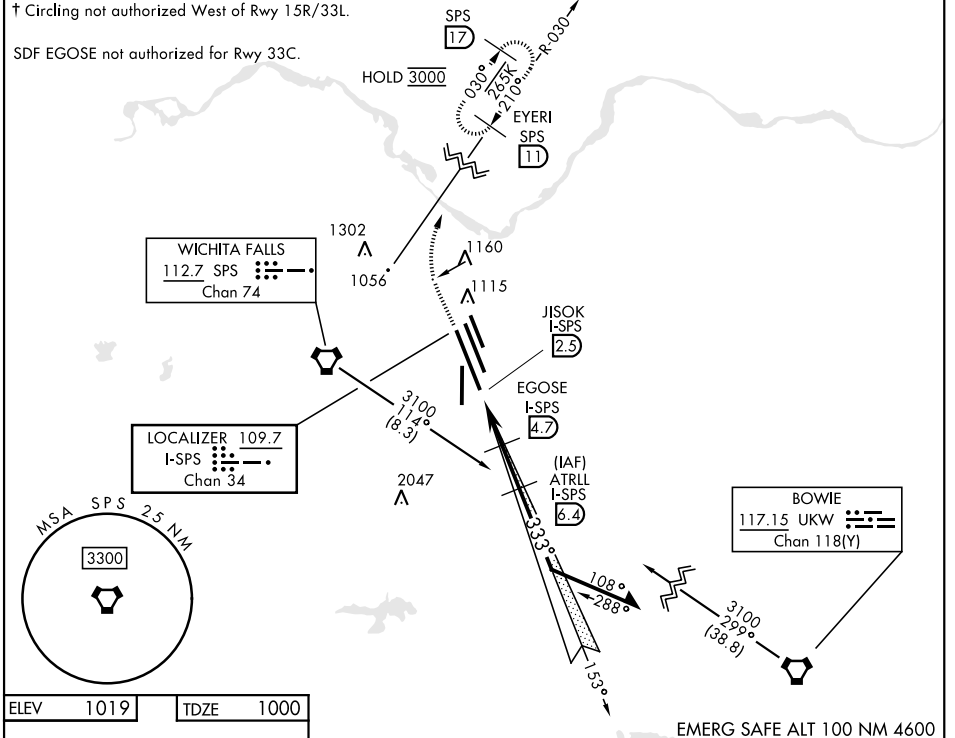
SHEPPARD AFB/WICHITA FALLS MUNI (KSPS)

<p>▼ * When ALS inop, increase vis to ¾ mile. ** When ALS inop, increase vis to 1 mile. *** When ALS inop, increase CAT AB vis to 1 mile; CAT CDE vis to 1½ miles.</p>	<p>MALSR A5</p>	<p>MISSED APPROACH: Climb to 2200, then climbing right turn to 3000 via SPS VORTAC R-030 to EYERI (SPS R-030/11) and hold.</p>
--	----------------------------	--

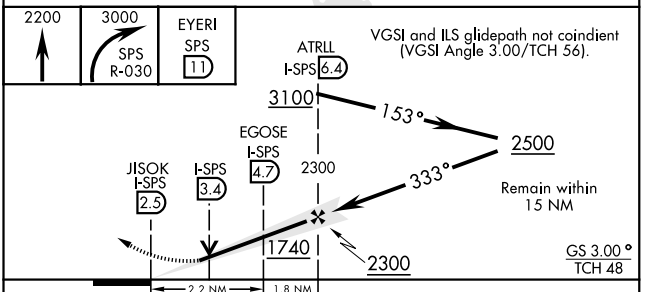
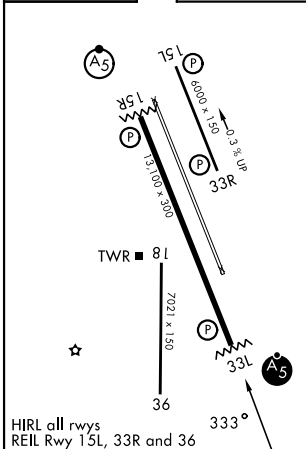
ATIS ★ 132.05 269.9	APP CON 118.2 269.025	TOWER ★ 119.75 0 279.525 (CTAF)	GND CON 125.5 289.4	ASR
-------------------------------	---------------------------------	---	-------------------------------	-----

† Circling not authorized West of Rwy 15R/33L.

SDF EGOSE not authorized for Rwy 33C.



ELEV 1019	TDZE 1000
-----------	-----------



CATEGORY	A	B	C	D	E
S-ILS 33L *		1200-½	200	(200-½)	
S-LOC 33L **		1340-½	340	(400-½)	
CIRCLING †	1440-1 421 (500-1)	1480-1 461 (500-1)	1480-1½ 461 (500-1½)	2100-3	1081 (1100-3)

WICHITA FALLS, TEXAS

33° 59' N-98° 30' W

SHEPPARD AFB/WICHITA FALLS MUNI (KSPS)

Amtd 8 25DEC25

ILS or LOC Y RWY 33L

SC-2, 14 MAY 2026 to 11 JUN 2026

SC-2, 14 MAY 2026 to 11 JUN 2026