

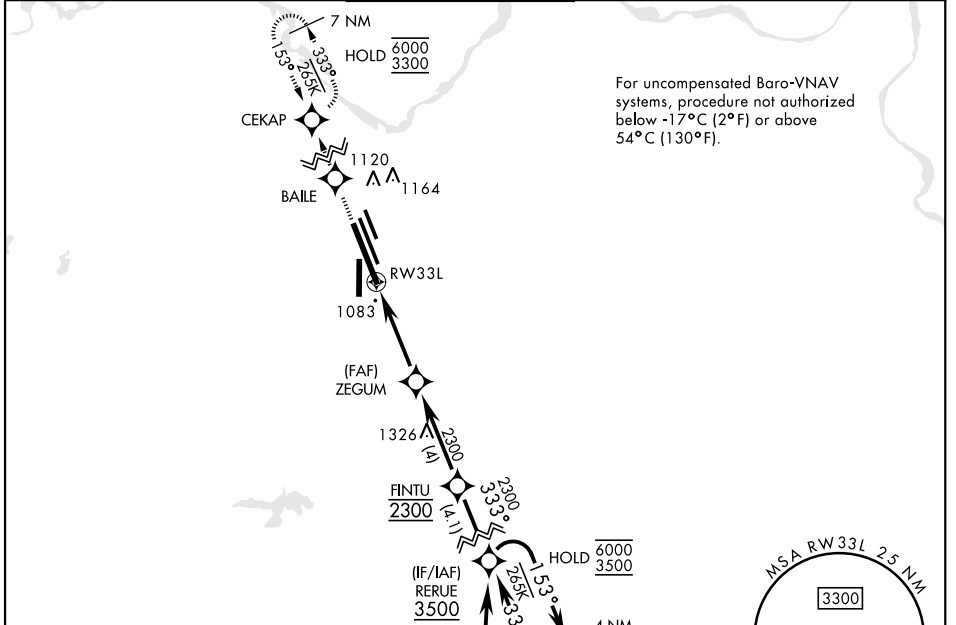
# RNAV (GPS) RWY 33L

APCH CRS	Rwy ldg	13.100
333°	TDZE	1000
	Arprt Elev	1019

[USAF]

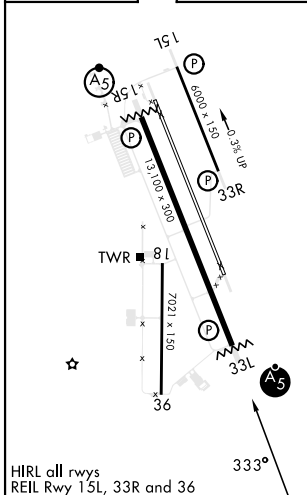
SHEPPARD AFB/WICHITA FALLS MUNI (KSPS)

RNP APCH - GPS		<b>MAJORS</b> 		MISSED APPROACH: Climb to 3300 direct BAILE, track 333° to CEKAP and hold.									
▼ * When ALS inop, increase vis to ¾ mile. ** When ALS inop, increase vis to 1 mile. *** Circling not authorized SW of Rwy 15R-33L.		ATIS ★ <b>132.05 269.9</b>		APP CON <b>118.2 269.025</b>		TOWER★ <b>119.750 279.525(CTAF)</b>		GND CON <b>125.5 289.4</b>		CLNC DEL <b>121.2 282.225</b>		ASR	

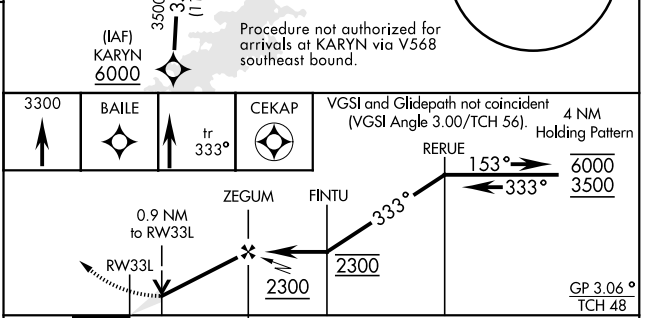


EMERG SAFE ALT 100 NM 4600

ELEV	1019	TDZE	1000
------	------	------	------



HIRL all rwys  
REIL Rwy 15L, 33R and 36



CATEGORY	A	B	C	D	E
LNNAV/VNAV DA *	1255-½		255	(300-½)	
LNNAV MDA **	1340-½		340	(400-½)	
CIRCLING ***	1440-1 421 (500-1)	1480-1 461 (500-1)	1480-1½ 461 (500-1½)	2100-3 1081 (1100-3)	

# RNAV (GPS) RWY 33L

SC-2, 14 MAY 2026 to 11 JUN 2026

SC-2, 14 MAY 2026 to 11 JUN 2026