

|  |                        |   |
|--|------------------------|---|
| WAAS<br>CH <b>49015</b><br><b>W09A</b> | APP CRS<br><b>088°</b> | Rwy Ldg <b>7000</b><br>TDZE <b>80</b><br>Apt Elev <b>80</b> |
|--|------------------------|---|

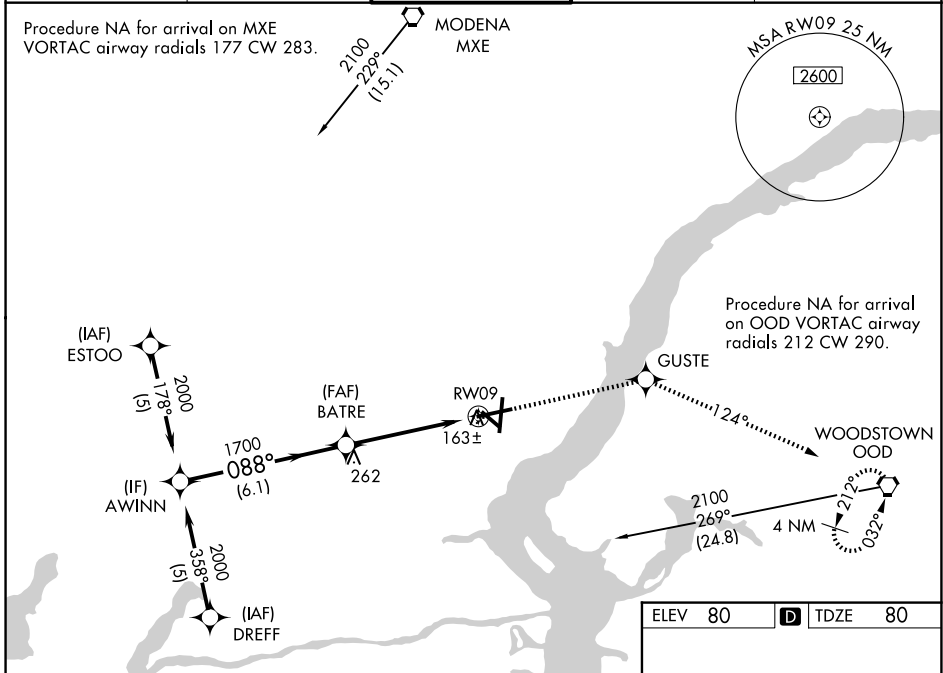
# RNAV (GPS) RWY 9

NEW CASTLE (ILG)

**⚠** For uncompensated Baro-VNAV systems, LNAV/VNAV NA below -1.5°C (5°F) or above 48°C (118°F). DME/DME RNP-0.3 NA. Helicopter visibility reduction below ¾ mile NA. VDP and Baro-VNAV NA when using Philadelphia Intl altimeter setting. When local altimeter setting not received, use Philadelphia Intl altimeter setting: increase LPV DA to 448, LNAV/VNAV DA to 568, and all MDAs 60 feet; increase LPV all Cats and Circling Cat D visibility ¼ SM and LNAV/VNAV all Cats visibility ½ SM.

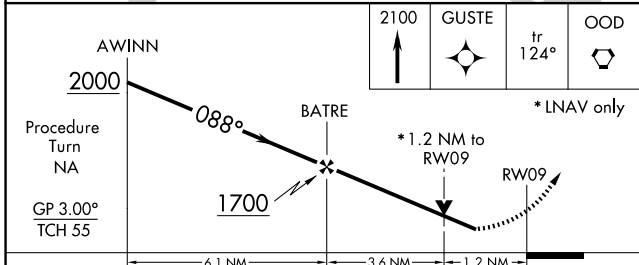
**MISSED APPROACH:**  
Climb to 2100 direct GUSTE and via track 124° to OOD VORTAC and hold.

|                       |   |   |                               |                         |
|-----------------------|---|---|-------------------------------|-------------------------|
| ATIS<br><b>123.95</b> | PHILADELPHIA APP CON<br><b>118.35 323.1</b> | WILMINGTON TOWER *<br><b>126.0</b> (CTAF) <b>352.05</b> | GND CON<br><b>121.7 275.8</b> | UNICOM<br><b>122.95</b> |
|-----------------------|---|---|-------------------------------|-------------------------|



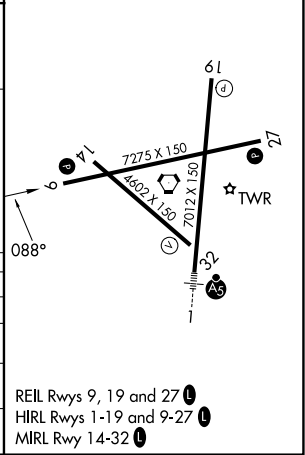
NE-3, 14 MAY 2026 to 11 JUN 2026

NE-3, 14 MAY 2026 to 11 JUN 2026



|         |                  |
|---------|------------------|
| ELEV 80 | <b>D</b> TDZE 80 |
|---------|------------------|

| CATEGORY     | A                    | B                    | C                      | D                      |
|--------------|----------------------|----------------------|------------------------|------------------------|
| LPV DA       | 394-1 314 (400-1)    |                      |                        |                        |
| LNAV/VNAV DA | 521-1½ 441 (500-1½)  |                      |                        |                        |
| LNAV MDA     | 520-1 440 (500-1)    |                      | 520-1¼ 440 (500-1½)    |                        |
| CIRCLING     | 540-1<br>460 (500-1) | 560-1<br>480 (500-1) | 600-1½<br>520 (600-1½) | 800-2¼<br>720 (800-2¼) |



REIL Rwy 9, 19 and 27  
HIRL Rwy 1-19 and 9-27  
MIRL Rwy 14-32