

LOC I-GMX 111.55	APP CRS 238°	Rwy Ldg 8016 TDZE 26 Apt Elev 32
----------------------------	------------------------	---

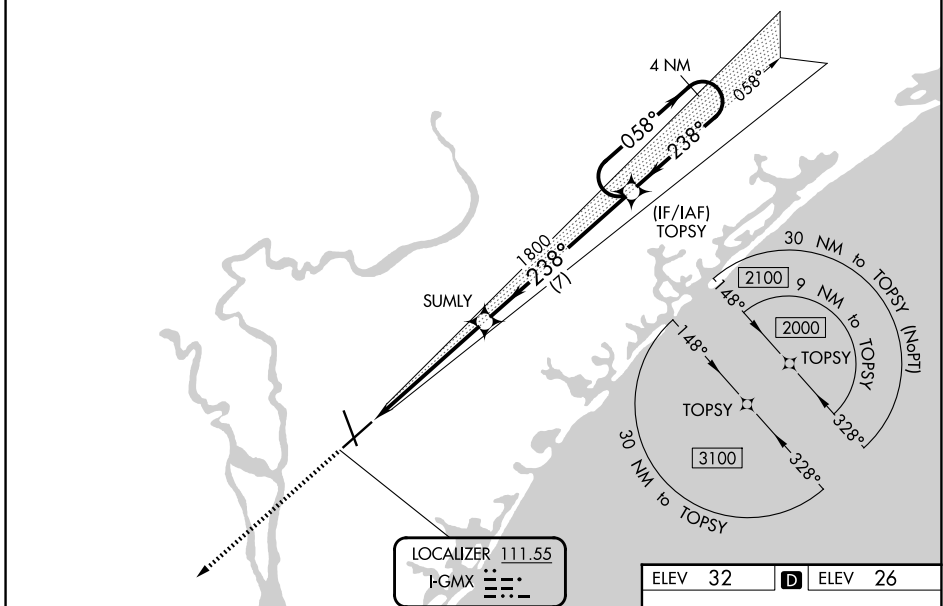
ILS Z RWY 24

WILMINGTON INTL (ILM)

	RNAV 1-GPS required. **RVR 1800 authorized with use of FD or AP or HUD to DA.	MALSR 	MISSED APPROACH: Climb to 3100 direct LURKY and hold.

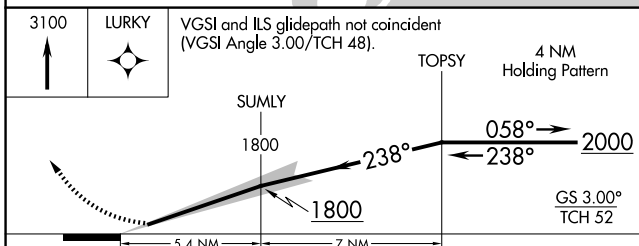
ATIS 124.975	WILMINGTON APP CON★ 118.25 284.65 (164°-343°) 135.75 317.425 (344°-163°)	WILMINGTON TOWER★ 119.9 (CTAF) 0 239.3	GND CON 121.9 348.6	UNICOM 122.95
------------------------	--	---	-------------------------------	-------------------------

RNAV 1-GPS or RADAR REQUIRED

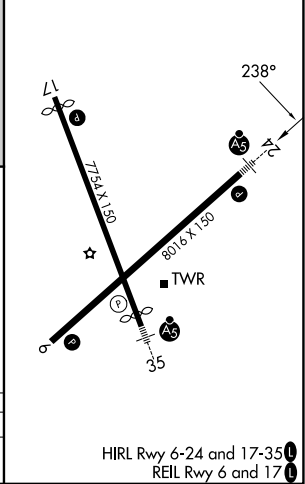


SE-2, 14 MAY 2026 to 11 JUN 2026

SE-2, 14 MAY 2026 to 11 JUN 2026



ELEV 32	D	ELEV 26
---------	----------	---------



CATEGORY	A	B	C	D
S-ILS 24**	226/24		200 (200-½)	

HIRL Rwy 6-24 and 17-35
REL Rwy 6 and 17