

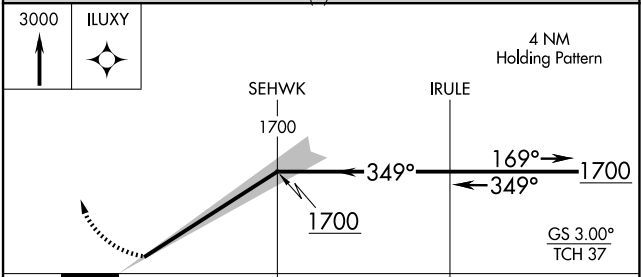
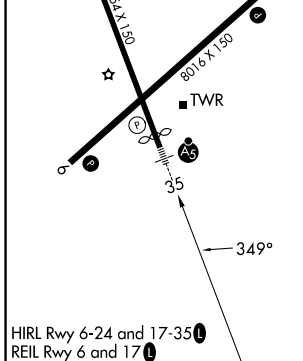
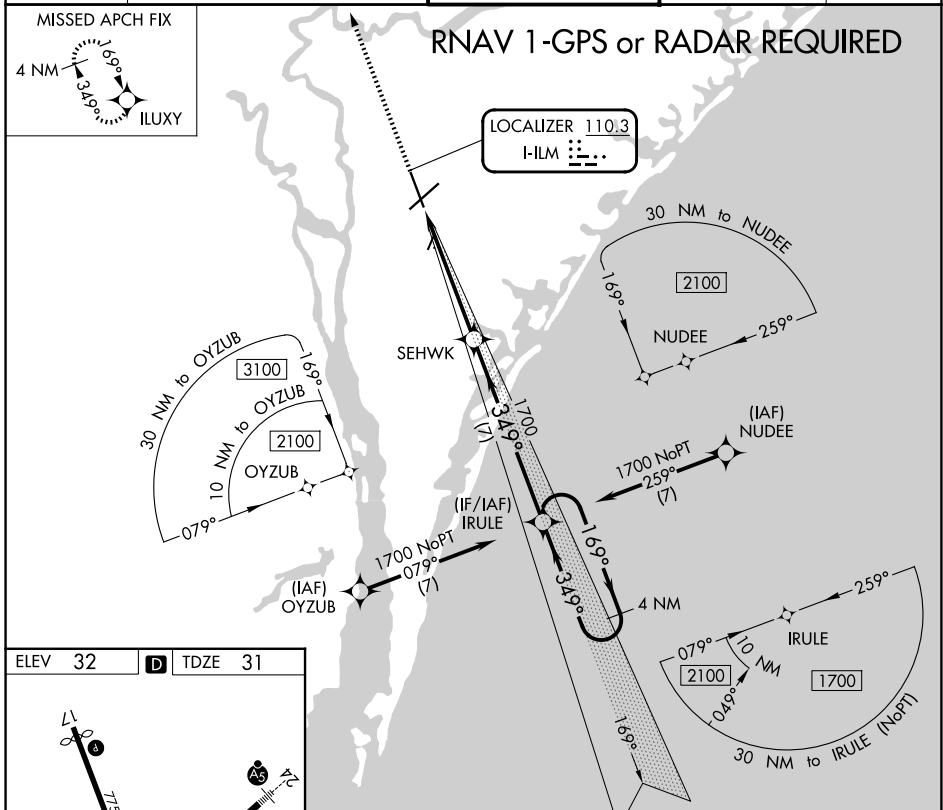
LOC I-ILM 110.3	APP CRS 349°	Rwy Ldg 7204 TDZE 31 Apt Elev 32
---------------------------	------------------------	---

ILS Z RWY 35

WILMINGTON INTL (ILM)

▽ ▲ NA	RNAV 1-GPS required.	MALSR 	MISSED APPROACH: Climb to 3000 direct ILLUXY and hold.
-------------------------	----------------------	------------------	--

ATIS 124.975	WILMINGTON APP CON★ 118.25 284.65 (164°-343°) 135.75 317.425 (344°-163°)	WILMINGTON TOWER★ 119.9 (CTAF) 0 239.3	GND CON 121.9 348.6	UNICOM 122.95
------------------------	--	---	-------------------------------	-------------------------



CATEGORY	A	B	C	D
S-ILS 35	242/24 211 (300-½)			

SE-2, 14 MAY 2026 to 11 JUN 2026

SE-2, 14 MAY 2026 to 11 JUN 2026