

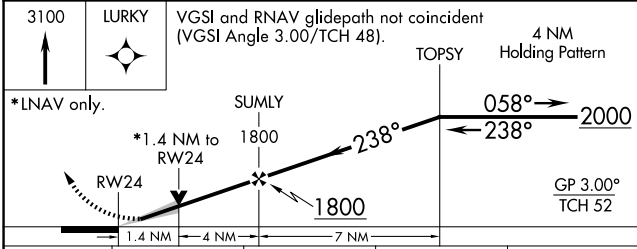
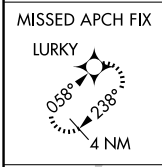
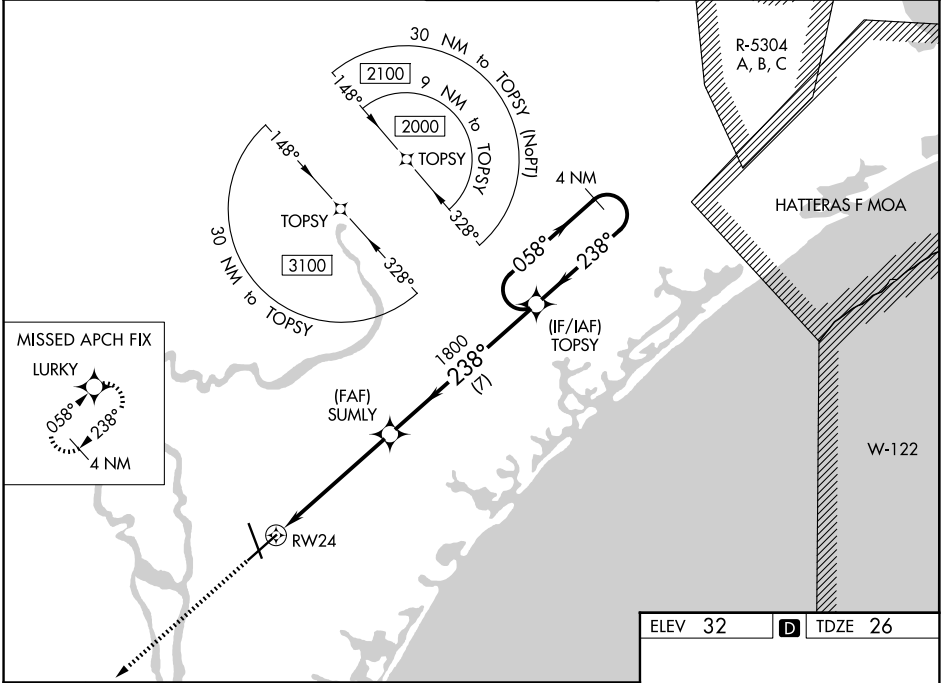
WAAS CH 45899 W24A	APP CRS 238°	Rwy Ldg 8016 TDZE 26 Apt Elev 32
--	------------------------	---

RNAV (GPS) RWY 24

WILMINGTON INTL (ILM)

	For uncompensated Baro-VNAV systems, LNAV/VNAV NA below -7°C (20°F) or above 54°C (130°F). DME/DME RNP-0.3 NA. **RVR 1800 authorized with use of FD or AP or HUD to DA.	MALSR 	MISSED APPROACH: Climb to 3100 direct LURKY and hold.
--	---	-----------	---

ATIS 124.975	WILMINGTON APP CON★ 118.25 284.65 (164°-343°) 135.75 317.425 (344°-163°)	WILMINGTON TOWER★ 119.9 (CTAF) 239.3	GND CON 121.9 348.6	UNICOM 122.95
------------------------	--	---	-------------------------------	-------------------------



ELEV 32	D	TDZE 26
---------	---	---------

Obstacle diagram: Shows obstacles with MSL and AGL altitudes and distances from the runway. Includes TWR, HIRL Rwy 6-24 and 17-35, and REL Rwy 6 and 17.

CATEGORY	A	B	C	D
LPV DA **	226/24 200 (200-½)			
LNAV/VNAV DA	401/40 375 (400-¾)			
LNAV MDA	500/24 474 (500-½)	500/50 474 (500-1)		
CIRCLING	560-1 528 (600-1)	720-2 688 (700-2)	920-3 888 (900-3)	

SE-2, 14 MAY 2026 to 11 JUN 2026

SE-2, 14 MAY 2026 to 11 JUN 2026