

LOC/DME I-KX 108.55 Chan 22(Y)	APP CRS 328°	Rwy Ldg TDZE Apt Elev 6847 171 173
--	------------------------	--

ILS or LOC RWY 33

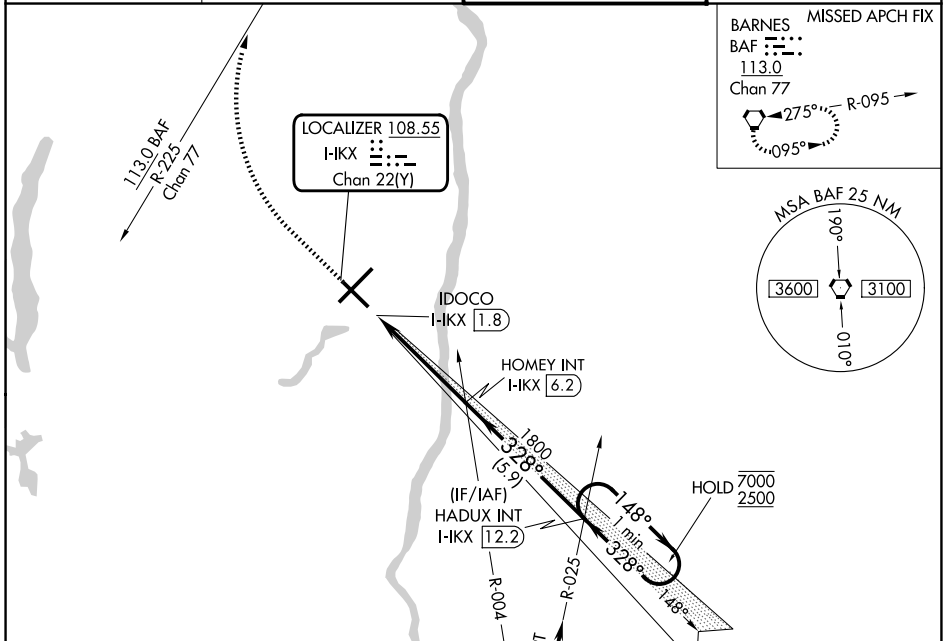
BRADLEY INTL (BDL)

⚠ Inop table does not apply to S-ILS 33 all Cats.
For inop ALS, increase S-LOC 33 Cat C/D to RVR 6000.

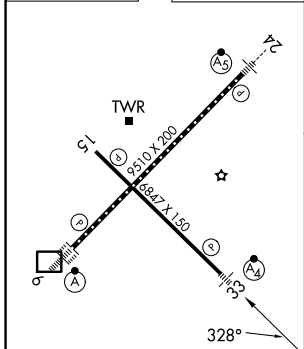
MALSF

MISSED APPROACH: Climb to 1800, then climbing right turn to 4000 on heading 360° and BAF VORTAC R-225 to BAF VORTAC and hold, continue climb-in-hold to 4000.

D-ATIS 118.15	BRADLEY APP CON 123.95 290.55 (061°-240°) 125.35 281.5 (241°-060°)	BRADLEY TOWER 120.3 351.8	GND CON 121.9 348.6
-------------------------	--	-------------------------------------	-------------------------------



ELEV 173	D	TDZE 171
----------	----------	----------



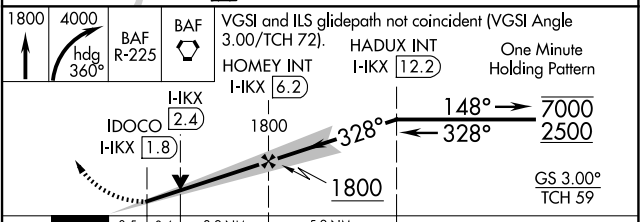
HIRL Rwy 6-24 and 15-33
REIL Rwy 15
TDZL/RCLS Rwy 6 and 24

FAF to MAP 4.4 NM

Knots	60	90	120	150	180
Min:Sec	4:24	2:56	2:12	1:46	1:28

IAF HARTFORD 114.9 HFD Chan 96

Procedure NA for arrivals at HFD
VOR/DME on airway radial 053.



CATEGORY	A	B	C	D
S-ILS 33		371/40	200 (200-¾)	
S-LOC 33	580/40	409 (500-¾)	580/50	409 (500-1)
CIRCLING	700-1	527 (600-1)	1100-2¾ 927 (1000-2¾)	1220-3 1047 (1100-3)

NE-1, 14 MAY 2026 to 11 JUN 2026

NE-1, 14 MAY 2026 to 11 JUN 2026