

APP CRS	Rwy Ldg	9509
238°	TDZE	170
	Apf Elev	173

RNAV (RNP) Z RWY 24

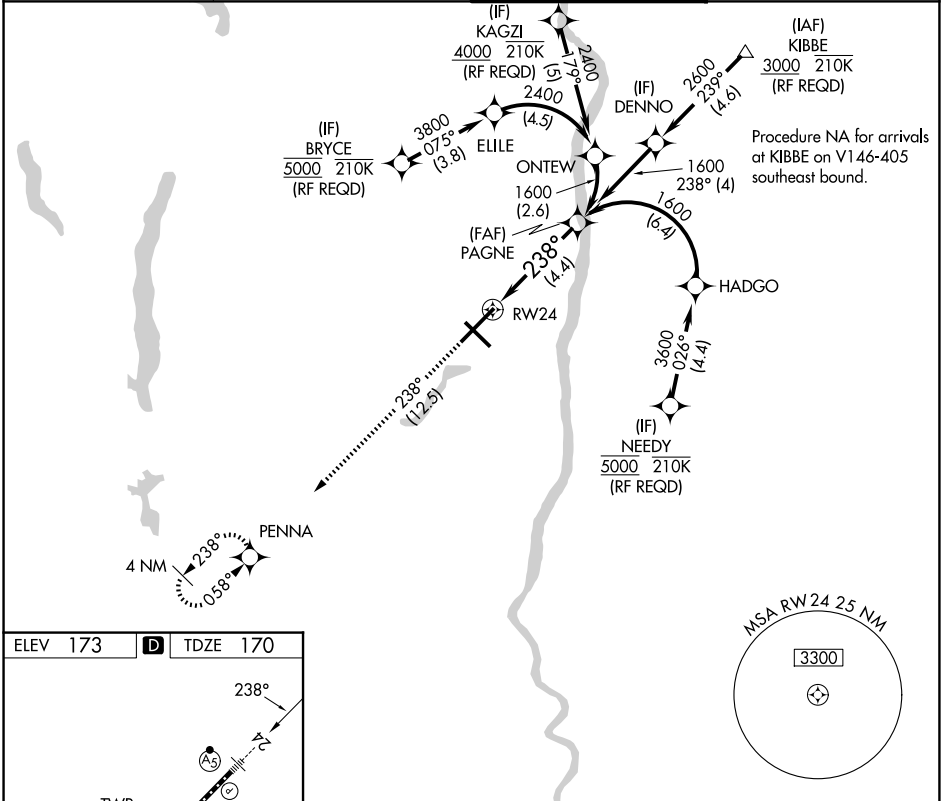
BRADLEY INTL (BDL)

▼ For uncompensated Baro-VNAV systems, procedure NA below -18°C (0°F) or above 54°C (130°F). GPS required. For inop ALS, increase all Cats visibility to 1½ SM.

MALSRL

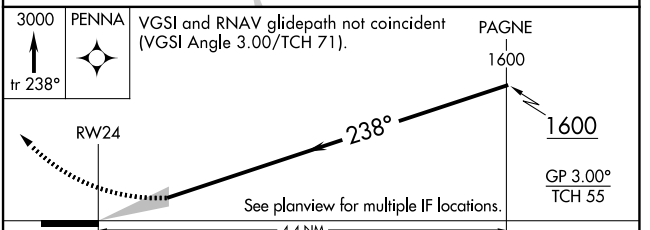
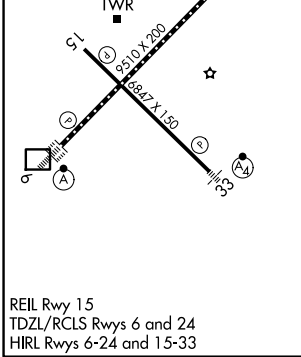
MISSED APPROACH: Climb to 3000 on track 238° to PENNA and hold.

D-ATIS 118.15	BRADLEY APP CON 123.95 290.55 (061°-240°) 125.35 281.5 (241°-060°)	BRADLEY TOWER 120.3 351.8	GND CON 121.9 348.6
-------------------------	--	-------------------------------------	-------------------------------



NE-1, 14 MAY 2026 to 11 JUN 2026

NE-1, 14 MAY 2026 to 11 JUN 2026



CATEGORY	A	B	C	D
RNP 0.30 DA	622/60 452 (500-1½)			

AUTHORIZATION REQUIRED