

| | | | |
|--|------------------------|-----------------------------|---|
| WAAS CH 93831 W13A | APP CRS 132° | Rwy Idg TDZE Apt Elev | 5003 2822 2822 |
|--|------------------------|-----------------------------|---|

RNAV (GPS) RWY 13

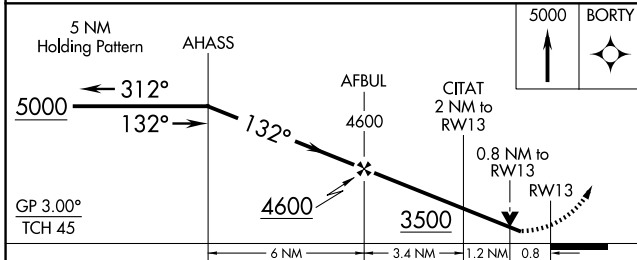
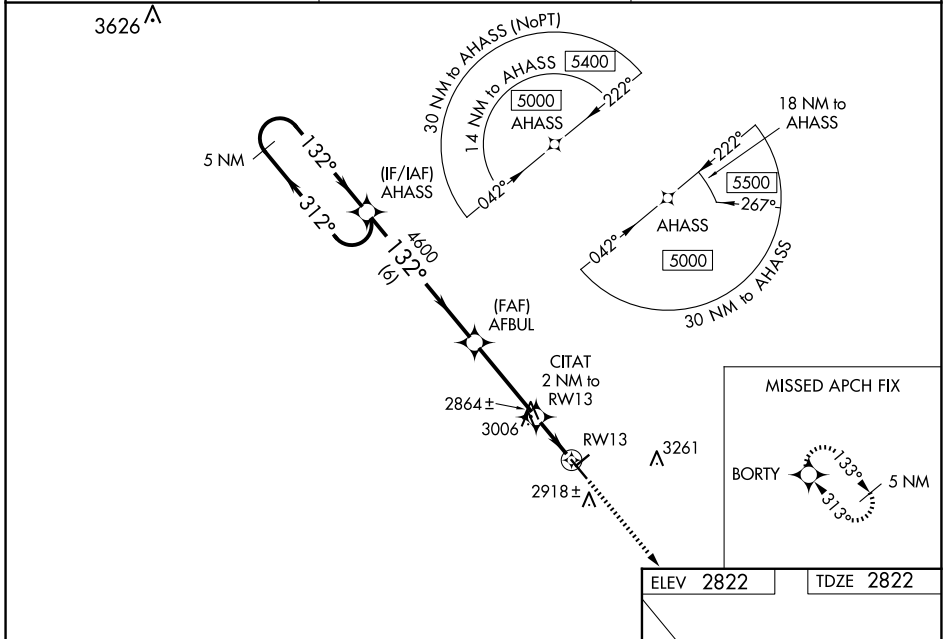
WINKLER COUNTY (INK)

RNP APCH - GPS.

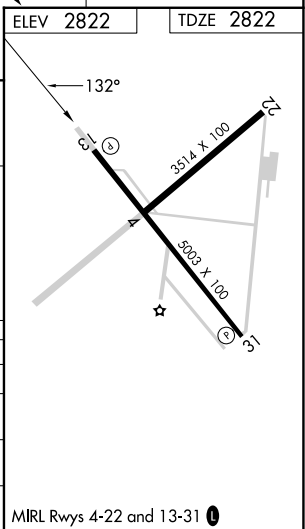
⚠ Baro-VNAV NA when using Pecos altimeter setting. For uncompensated Baro-VNAV systems, LNAV/VNAV NA below -20°C or above 54°C. VDP NA with Pecos altimeter setting. Rwy 13 helicopter visibilities reduction below 3/4 SM NA. When local altimeter setting not received, use Pecos altimeter setting: increase LPV DA to 3167 feet and all Cats visibilities 1/4 SM; increase LNAV/VNAV DA to 3167 feet and all Cats visibilities 1/4 SM; increase all MDAs 100 feet and LNAV Cat C visibility 3/8 SM and Circling Cat C visibility 1/4 SM.

MISSED APPROACH:
Climb to 5000 direct BORTY and hold.

| | | |
|------------------------|--|---------------------------------|
| ASOS 118.325 | FORT WORTH CENTER 133.1 298.95 | UNICOM 123.0 (CTAF) 0 |
|------------------------|--|---------------------------------|



| CATEGORY | A | B | C | D |
|--------------|----------|---------------|-------------------------------|----|
| LPV DA | 3072-3/4 | 250 (300-3/4) | | NA |
| LNAV/VNAV DA | 3072-3/4 | 250 (300-3/4) | | NA |
| LNAV MDA | 3320-1 | 498 (500-1) | 3320-1 3/8 498 (500-1 3/8) | NA |
| CIRCLING | 3320-1 | 498 (500-1) | 3580-2 1/4 758 (800-2 1/4) | NA |



SC-3, 14 MAY 2026 to 11 JUN 2026

SC-3, 14 MAY 2026 to 11 JUN 2026