

(JEANY1..JEANY) 25331

AL-463 (FAA)

# JEANY ONE DEPARTURE (RNAV)

SMITH REYNOLDS (INT)  
WINSTON SALEM, NORTH CAROLINA

GREENSBORO DEP CON  
124.35 269.225  
ATIS  
121.3  
GND CON  
128.25  
WINSTON-SALEM TOWER ★  
123.75 257.8

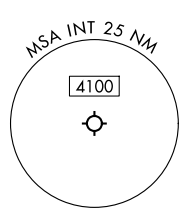
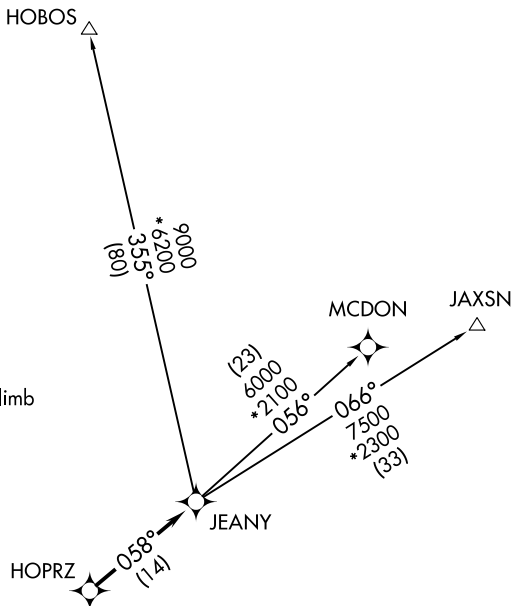
RNAV 1 - DME/DME/IRU or GPS.

RADAR required. For non-GPS equipped aircraft, LIB DME must be operational for HOBOS Transition.

**TOP ALTITUDE:  
ASSIGNED BY ATC**

### TAKEOFF MINIMUMS

Rwy 4, 15, 33: Standard.  
Rwy 22: Standard with minimum climb of 340'/NM to 1400.



NOTE: Chart not to scale.

### DEPARTURE ROUTE DESCRIPTION

**TAKEOFF ALL RUNWAYS:** Climb on assigned headings for vectors to HOPRZ, then on track 058° to JEANY, then on assigned transition. Maintain ATC assigned altitude, expect filed altitude 10 minutes after departure.

- HOBOS TRANSITION (JEANY1..HOBOS)
- JAXSN TRANSITION (JEANY1..JAXSN)
- MCDON TRANSITION (JEANY1..MCDON)

# JEANY ONE DEPARTURE (RNAV)

(JEANY1..JEANY) 27NOV25

WINSTON SALEM, NORTH CAROLINA  
SMITH REYNOLDS (INT)

SE-2, 14 MAY 2026 to 11 JUN 2026

SE-2, 14 MAY 2026 to 11 JUN 2026