

WAAS CH 82011 W33A	APP CRS 332°	Rwy Ldg TDZE 941 Apt Elev 969
--	------------------------	---

RNAV (GPS) RWY 33

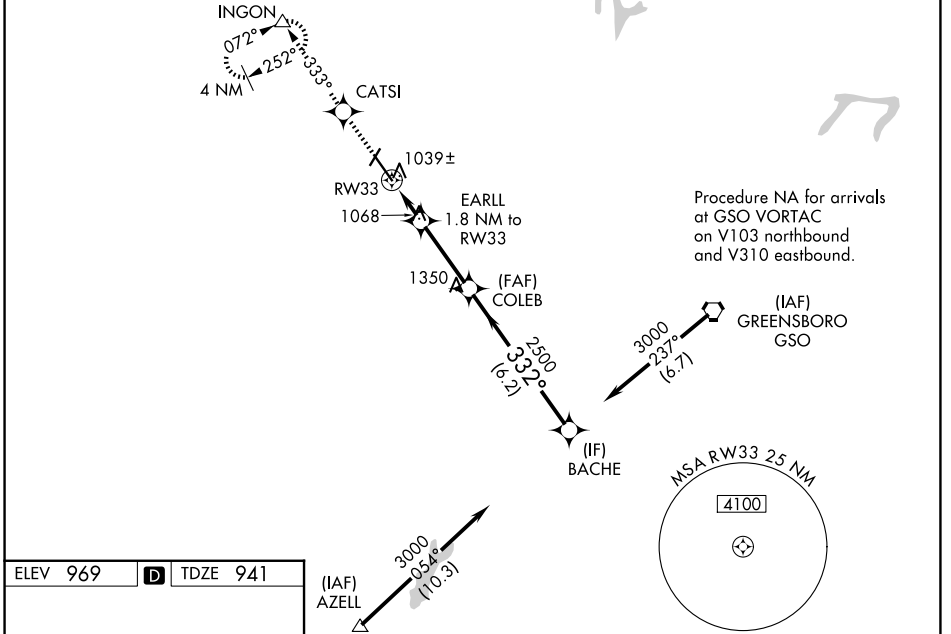
SMITH REYNOLDS (INT)

⚠ For inoperative MALSR, when using Piedmont Triad Intl altimeter setting, increase LPV all Cats visibility to 1 mile. Baro-VNAV NA when using Piedmont Triad Intl altimeter setting. For uncompensated Baro-VNAV systems, LNAV/VNAV NA below -1.6°C (4°F) or above 47°C (116°F). DME/DME RNP-0.3 NA. When local altimeter setting not received, use Piedmont Triad Intl altimeter setting; increase LPV DA to 1180 feet, LNAV/VNAV DA to 1446 feet and visibility all Cats ¼ SM; increase all MDA 40 feet and Circling visibility Cats C/D ¼ SM. ** RVR 1800 authorized with use of FD or AP or HUD to DA, NA when using Piedmont Triad Intl altimeter setting. Circling Rwy 4, 22 NA at night.

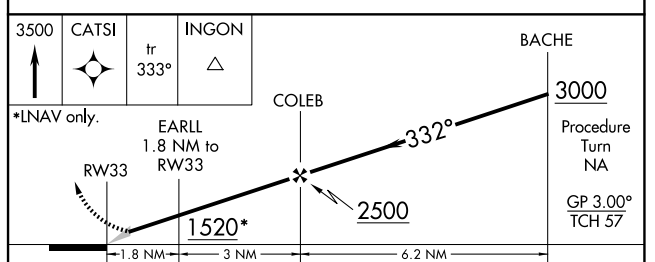
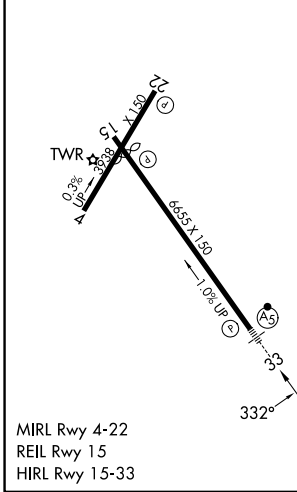
MALSR

MISSED APPROACH:
Climb to 3500 direct CATSI and on 333° track to INGON and hold, continue climb-in-hold to 3500.

ATIS 121.3	GREENSBORO APP CON 124.35 269.225	WINSTON-SALEM TOWER ★ 123.75 (CTAF) 257.8	GND CON 128.25	UNICOM 122.95
----------------------	---	---	--------------------------	-------------------------



ELEV 969	D	TDZE 941
----------	----------	----------



CATEGORY	A	B	C	D
LPV DA**	1141/24 200 (200-1/2)			
LNAV/VNAV DA	1407/60 466 (500-1/4)			
LNAV MDA	1380/24	439 (500-1/2)	1380/40 439 (500-3/4)	1380/50 439 (500-1)
CIRCLING	1480-1 511 (600-1)	1580-1 611 (700-1)	1700-2 731 (800-2)	1760-2/2 791 (800-2/2)

SE-2, 14 MAY 2026 to 11 JUN 2026

SE-2, 14 MAY 2026 to 11 JUN 2026