

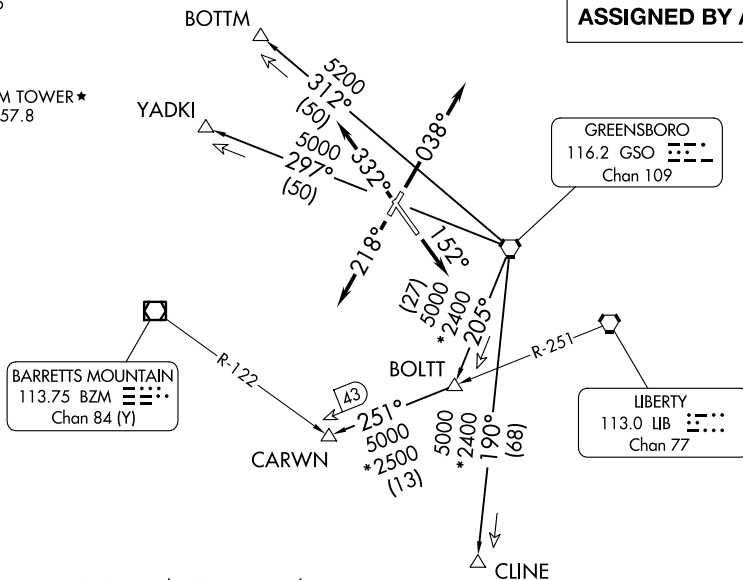
# TRIAD NINE DEPARTURE

AL-463 (FAA)

SMITH REYNOLDS (INT)  
WINSTON SALEM, NORTH CAROLINA

GREENSBORO DEP CON  
124.35 269.225  
ATIS  
121.3  
GND CON  
128.25  
WINSTON-SALEM TOWER\*  
123.75 (CTAF) 257.8

**TOP ALTITUDE:  
ASSIGNED BY ATC**



NOTE: RADAR and DME required.

### TAKEOFF MINIMUMS

Rwys 4, 15, 33: Standard.

Rwy 22: 500-2¾ or standard with minimum climb of 330' per NM to 1600.

NOTE: Chart not to scale.

### DEPARTURE ROUTE DESCRIPTION

TAKEOFF RUNWAY 4: Climb heading 038°, thence . . .

TAKEOFF RUNWAY 15: Climb heading 152°, thence . . .

TAKEOFF RUNWAY 22: Climb heading 218°, thence . . .

TAKEOFF RUNWAY 33: Climb heading 332°, thence . . .

. . . maintain altitude assigned by ATC. Expect vector to intercept assigned radial associated with the issued transition. Proceed via the depicted radial to the transition fix, thence as filed. If no transition assigned, expect vector to the appropriate fix. Expect requested altitude/flight level ten (10) minutes after departure.

BOTTM TRANSITION (TRI9.BOTTM): Expect vector to intercept GSO R-312 to BOTTM.

CARWN TRANSITION (TRI9.CARWN): Expect vector to intercept GSO R-205 to BOLTT, then on LIB R-251 to CARWN.

CLINE TRANSITION (TRI9.CLINE): Expect vector to intercept GSO R-190 to CLINE.

YADKI TRANSITION (TRI9.YADKI): Expect vector to intercept GSO R-297 to YADKI.