

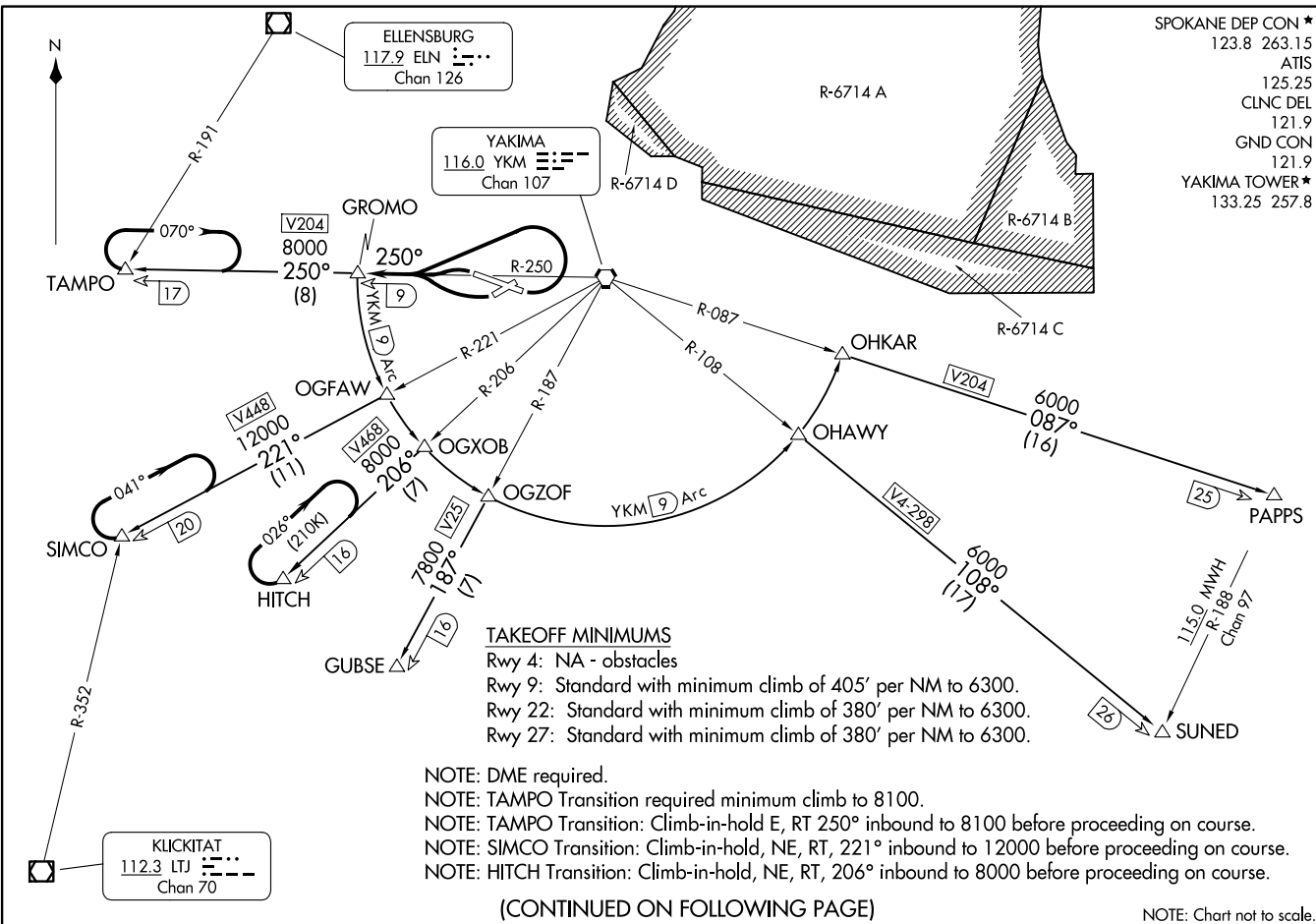
GROMO FOUR DEPARTURE
(GROMO4.GROMO) 10NOV16

GROMO FOUR DEPARTURE
23334

SPOKANE DEP CON ★
123.8 263.15
ATIS
125.25
CLNC DEL
121.9
GND CON
121.9
YAKIMA TOWER ★
133.25 257.8

AI-465 (FAA)

YAKIMA AIR TRML/MCALLISTER FLD (YKM)
YAKIMA, WASHINGTON



TAKEOFF MINIMUMS
 Rwy 4: NA - obstacles
 Rwy 9: Standard with minimum climb of 405' per NM to 6300.
 Rwy 22: Standard with minimum climb of 380' per NM to 6300.
 Rwy 27: Standard with minimum climb of 380' per NM to 6300.

NOTE: DME required.
 NOTE: TAMPO Transition required minimum climb to 8100.
 NOTE: TAMPO Transition: Climb-in-hold E, RT 250° inbound to 8100 before proceeding on course.
 NOTE: SIMCO Transition: Climb-in-hold, NE, RT, 221° inbound to 12000 before proceeding on course.
 NOTE: HITCH Transition: Climb-in-hold, NE, RT, 206° inbound to 8000 before proceeding on course.

(CONTINUED ON FOLLOWING PAGE)

NOTE: Chart not to scale.

YAKIMA, WASHINGTON
YAKIMA AIR TRML/MCALLISTER FLD (YKM)



DEPARTURE ROUTE DESCRIPTION

TAKEOFF RUNWAYS 9, 27: Climbing left turn thence. . . .

TAKEOFF RUNWAY 22: Climbing right turn thence. . . .

. . . . intercept and proceed on YKM R-250 to GROMO/YKM 9 DME, then on assigned transition.

GUBSE TRANSITION (GROMO4.GUBSE): From over GROMO DME Fix on YKM 9 DME Arc to OGZOF DME fix and YKM VORTAC R-187 to GUBSE DME fix.

HITCH TRANSITION (GROMO4.HITCH): From over GROMO DME Fix on YKM 9 DME Arc to OGXOB DME fix and YKM VORTAC R-206 to HITCH DME fix.

PAPPS TRANSITION (GROMO4.PAPPS): From over GROMO DME Fix on YKM 9 DME Arc to OHKAR DME fix and YKM VORTAC R-087 to PAPPS DME fix.

SIMCO TRANSITION (GROMO4.SIMCO): From over GROMO DME Fix on YKM 9 DME Arc to OGFAW DME fix and YKM VORTAC R-221 to SIMCO INT.

SUNED TRANSITION (GROMO4.SUNED): From over GROMO DME Fix on YKM 9 DME Arc to OHAWY DME fix and YKM R-108 to SUNED INT.

TAMPO TRANSITION (GROMO4.TAMPO): From over GROMO DME Fix on YKM VORTAC R-250 to TAMPO INT.

NW-1, 14 MAY 2026 to 11 JUN 2026

NW-1, 14 MAY 2026 to 11 JUN 2026