

APP CRS	Rwy Ldg	<b>7604</b>
<b>094°</b>	TDZE	<b>1099</b>
	Apt Elev	<b>1099</b>

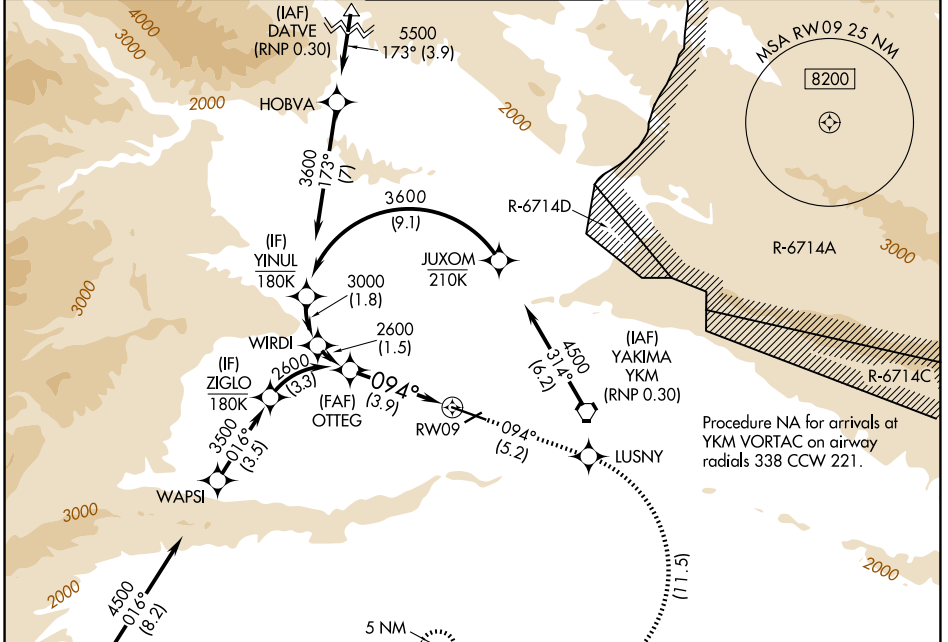
# RNAV (RNP) RWY 9

YAKIMA AIR TRML/MCALLISTER FLD (YKM)

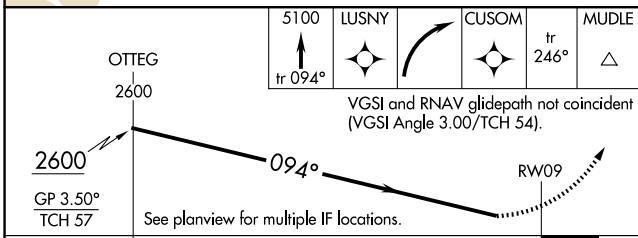
**RF required. GPS required. For uncompensated Baro-VNAV systems, procedure NA below -17°C (2°F) or above 45°C (113°F). \*Missed approach requires a minimum climb of 425 feet per NM to 3000.**

**MISSED APPROACH:** Climb to 5100 on track 094° to LUSNY right turn to CUSOM and on track 246° to MUDLE and hold.

ATIS <b>125.25</b>	SPOKANE APP CON* <b>123.8 263.15</b>	YAKIMA TOWER* <b>133.25 (CTAF) 257.8</b>	GND CON <b>121.9</b>	UNICOM <b>122.95</b>
-----------------------	---	---	-------------------------	-------------------------

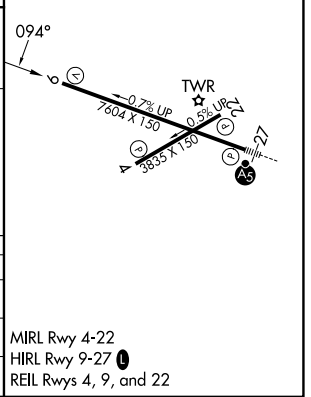


ELEV 1099	<b>D</b>	TDZE 1099
-----------	----------	-----------



CATEGORY	A	B	C	D
RNP 0.30 DA*		1473-1	374 (400-1)	NA
RNP 0.30 DA		1934-2½	835 (900-2½)	NA

## AUTHORIZATION REQUIRED



MRL Rwy 4-22  
HIRL Rwy 9-27  
REIL Rws 4, 9, and 22

NW-1, 14 MAY 2026 to 11 JUN 2026

NW-1, 14 MAY 2026 to 11 JUN 2026