

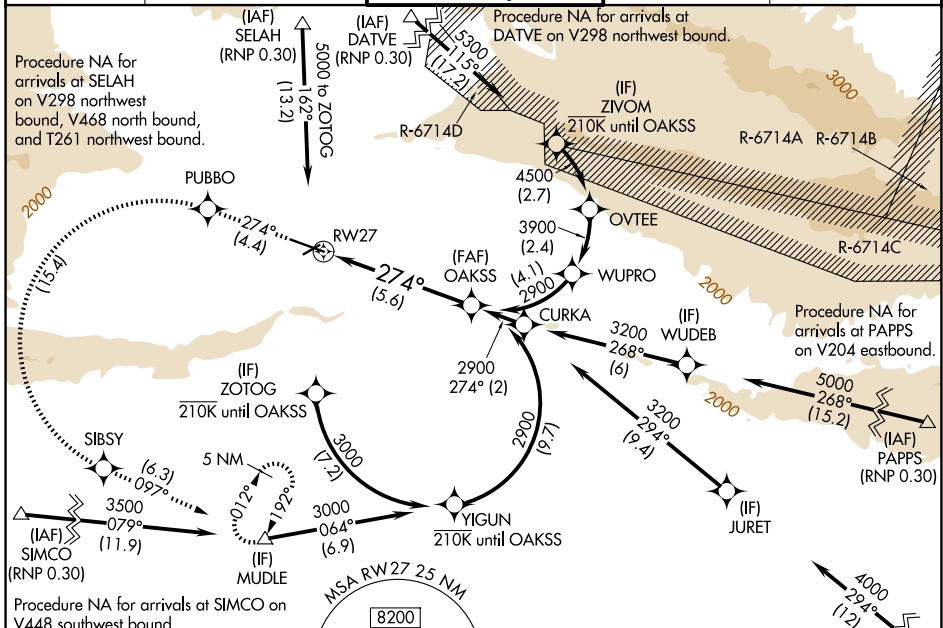
APP CRS 274°	Rwy Ldg TDZE Apt Elev	7604 1068 1099
------------------------	-----------------------------	---

RNAV (RNP) Y RWY 27

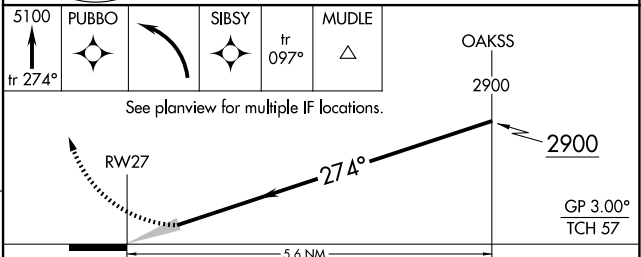
YAKIMA AIR TRML/MCALLISTER FLD (YKM)

RNP APCH - GPS. From MUDE or OVTEE or YIGUN: RF.	MALSR 	MISSED APPROACH: Climb to 5100 on track 274° to PUBBO left turn to SIBSY and on track 097° to MUDE and hold. *Missed approach requires minimum climb of 425 feet per NM to 3400.
<p>▼ For uncompensated Baro-VNAV systems, procedure NA below -1.5°C or above 54°C. DATVE transition NA when R-6714 A, C, D active. For inop ALS, increase RNP 0.30* all Cats visibility to RVR 5500 and RNP 0.30 all Cats to 2½ SM.</p>		

ATIS 125.25	SPOKANE APP CON * 123.8 263.15	YAKIMA TOWER * 133.25 (CTAF) 0 257.8	GND CON 121.9	UNICOM 122.95
-----------------------	--	--	-------------------------	-------------------------



ELEV 1099	D	TDZE 1068
-----------	----------	-----------



CATEGORY	A	B	C	D
RNP 0.30 DA*		1418/30	350 (400-5%)	
RNP 0.30 DA		1845-1¾	777 (800-1¾)	

AUTHORIZATION REQUIRED

NW-1, 14 MAY 2026 to 11 JUN 2026

NW-1, 14 MAY 2026 to 11 JUN 2026