


WAAS CH <b>90512</b> <b>W27A</b>	APP CRS <b>274°</b>	Rwy Ldg <b>7604</b> TDZE <b>1068</b> Apt Elev <b>1099</b>
----------------------------------------	------------------------	-----------------------------------------------------------------

# RNAV (GPS) X RWY 27

YAKIMA AIR TRML/MCALLISTER FLD (YKM)

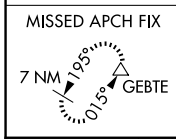
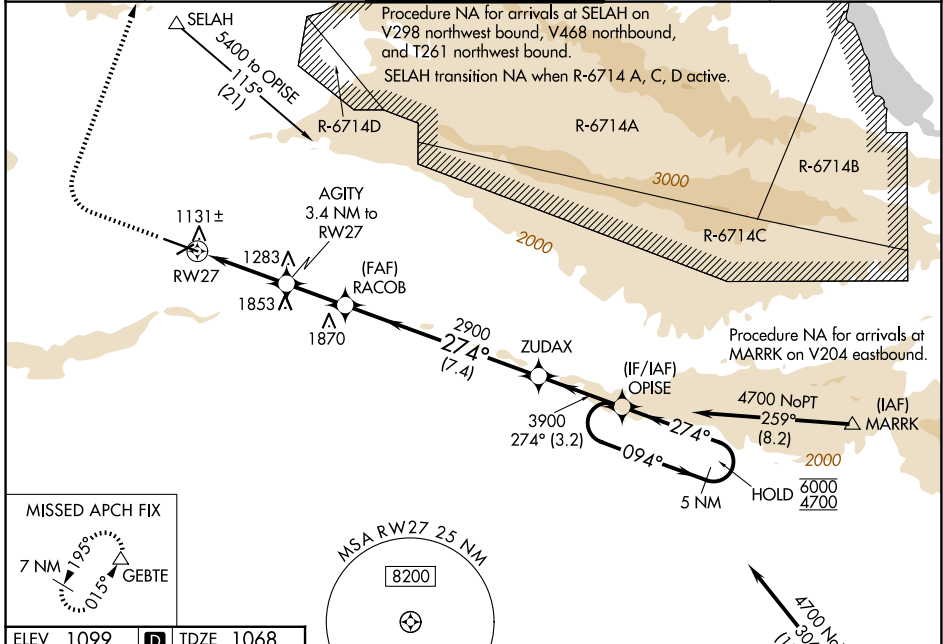
RNP APCH.

▼ Circling NA south of Rws 9 and 27.  
 ▲ For inop ALS, increase LPV all Cats visibility to 1¾ SM.  
 \*RVR 1800 authorized with use of FD or AP or HUD to DA.

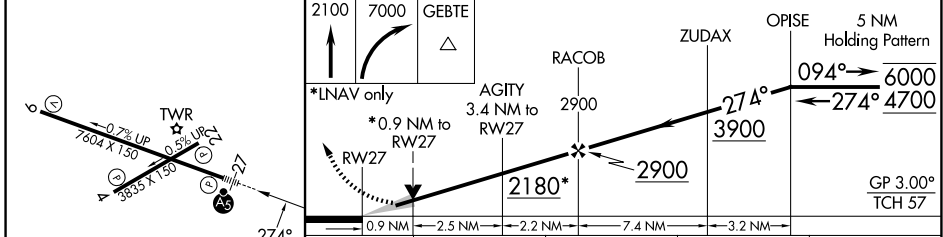
MALSRL  


MISSED APPROACH: Climb to 2100 then climbing right turn to 7000 direct GEBTE and hold. Continue climb-in-hold to 7000. \*Missed approach requires minimum climb of 300 feet per NM to 3700. #Missed approach requires minimum climb of 300 feet per NM to 4900.

ATIS <b>125.25</b>	SPOKANE APP CON* <b>123.8 263.15</b>	YAKIMA TOWER* <b>133.25 (CTAF) 0 257.8</b>	GND CON <b>121.9</b>	UNICOM <b>122.95</b>
-----------------------	-----------------------------------------	-----------------------------------------------	-------------------------	-------------------------



ELEV 1099	<b>D</b>	TDZE 1068
-----------	----------	-----------



CATEGORY	A	B	C	D
LPV DA*	1268/24		200 (200-½)	
LPV DA	1668-1¼ 600 (600-1¼)			
LNAV MDA#	1400/24 332 (400-½)		1400/26 332 (400-½)	
LNAV MDA	1720/24 652 (700-½)		1720-1¾ 652 (700-1¾)	
CIRCLING	1720-1 621 (700-1)		1880-2¼ 781 (800-2¼) 2280-3 1181 (1200-3)	

MIRL Rwy 4-22  
 HIRL Rwy 9-27  
 REIL Rws 4, 9, and 22

NW-1, 14 MAY 2026 to 11 JUN 2026

NW-1, 14 MAY 2026 to 11 JUN 2026