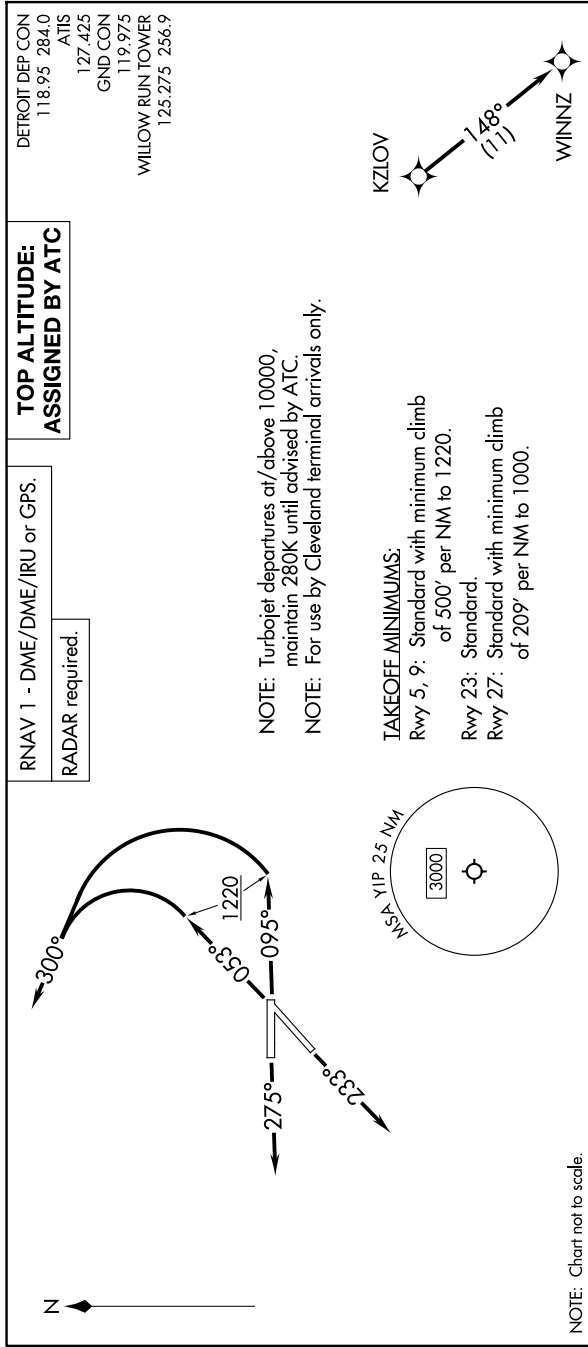


EC-1, 14 MAY 2026 to 11 JUN 2026



NOTE: Chart not to scale.

**TOP ALTITUDE:  
ASSIGNED BY ATC**

RNAV 1 - DME/DME/IRU or GPS.  
RADAR required.

DETROIT DEP CON  
118.95 284.0  
ATIS  
127.425  
GND CON  
119.975  
WILLOW RUN TOWER  
125.275 256.9

NOTE: Turbojet departures at/above 10000, maintain 280K until advised by ATC.  
NOTE: For use by Cleveland terminal arrivals only.

TAKEOFF MINIMUMS:  
Rwy 5, 9: Standard with minimum climb of 500' per NM to 1220.  
Rwy 23: Standard.  
Rwy 27: Standard with minimum climb of 209' per NM to 1000.

**DEPARTURE ROUTE DESCRIPTION**

TAKEOFF RUNWAY 5: Climb on heading 053° to 1220, then on heading 300° or as assigned by ATC, for RADAR vectors to KZLOV, thence...  
TAKEOFF RUNWAY 9: Climb on heading 095° to 1220, then on heading 300° or as assigned by ATC, for RADAR vectors to KZLOV, thence...  
TAKEOFF RUNWAY 23: Climb on heading 233° or as assigned by ATC, for RADAR vectors to KZLOV, thence...  
TAKEOFF RUNWAY 27: limb on heading 275° or as assigned by ATC, for RADAR vectors to KZLOV, thence...  
...on track 148° to WINNZ. Maintain ATC assigned altitude, expect filed altitude ten minutes after departure.

EC-1, 14 MAY 2026 to 11 JUN 2026