

METRO FOUR DEPARTURE
(METRO4.DXO) 05SEP24

ATIS 127.425
GND CON
119.975
WILLOW RUN TOWER
125.275 256.9

RADAR required. DME required.

TOP ALTITUDE:
3000

(METRO4.DXO) 24249
METRO FOUR DEPARTURE

AL-467 (FAA)

WILLOW RUN (Y1P)
DETROIT, MICHIGAN

TAKEOFF MINIMUMS

Rwys 5, 9, 23: Standard.

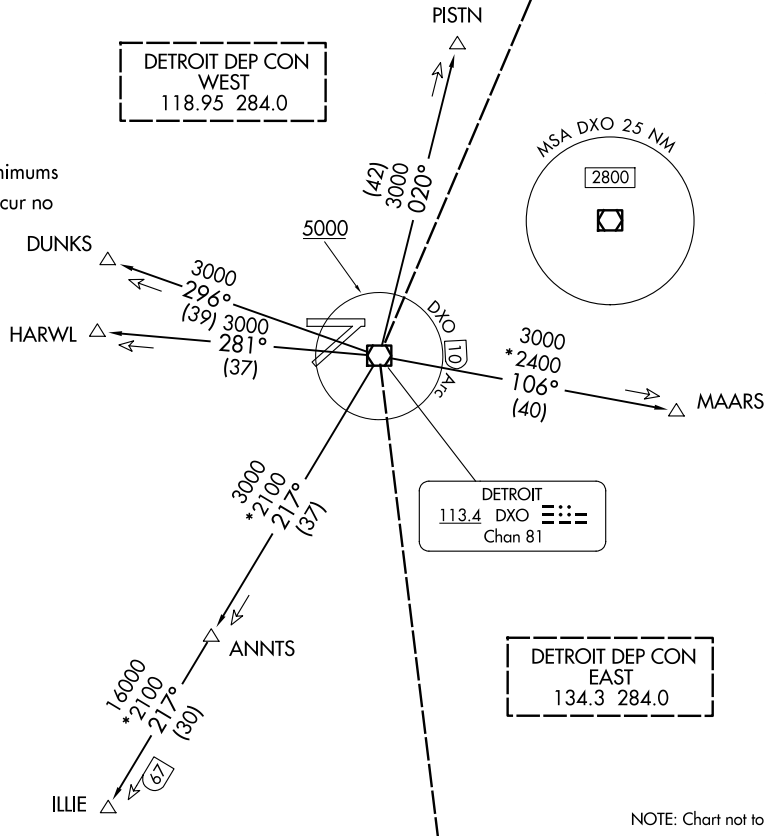
Rwy 27: 300-1½ or standard with a minimum climb of 209'
per NM to 1000, or alternatively, with standard takeoff minimums
and a normal 200' per NM climb gradient, takeoff must occur no
later than 1300' prior to departure end of runway.

NOTE: For use by non-RNAV equipped aircraft only.
NOTE: When using this departure, file the appropriate
depicted departure fix and route. Aircraft over
HARWL must file FL220 and below. Aircraft landing
Cleveland (CLE) must file MAARS transition.
Turbojet departures at/above 10000, maintain
280K until advised by ATC. If unable, advise ATC
prior to departure.

SPECIAL INSTRUCTIONS:

For appropriate departure control frequency, see graphic.
Use frequency depicted within the sector where first
navaid/fix for your route is located (sectors indicated by
dashed lines; frequencies in dashed box within).

(CONTINUED ON FOLLOWING PAGE)



DETROIT, MICHIGAN
WILLOW RUN (Y1P)



DEPARTURE ROUTE DESCRIPTION

TAKEOFF ALL RUNWAYS: Climb on assigned heading. Maintain ATC assigned altitude for RADAR vectors to intercept filed/assigned transition or enroute fix/navaid. When ATC assigned altitude is at or above 5000, cross DXO 10 DME Arc at or above 5000 for noise abatement. If unable to comply, advise ATC prior to departure. Expect clearance to filed altitude/flight level within ten (10) minutes after departure.

DUNKS TRANSITION (METRO4.DUNKS): From over DXO VOR/DME on DXO R-296 to DUNKS.

HARWL TRANSITION (METRO4.HARWL): From over DXO VOR/DME on DXO R-281 to HARWL.

ILLIE TRANSITION (METRO4.ILLIE): From over DXO VOR/DME on DXO R-217 to ILLIE.

MAARS TRANSITION (METRO4.MAARS): From over DXO VOR/DME on DXO R-106 to MAARS.

PISTN TRANSITION (METRO4.PISTN): From over DXO VOR/DME on DXO R-020 to PISTN.

EC-1, 14 MAY 2026 to 11 JUN 2026

EC-1, 14 MAY 2026 to 11 JUN 2026