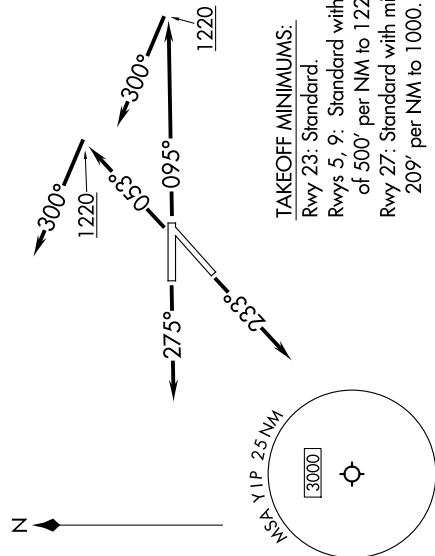


EC-1, 14 MAY 2026 to 11 JUN 2026

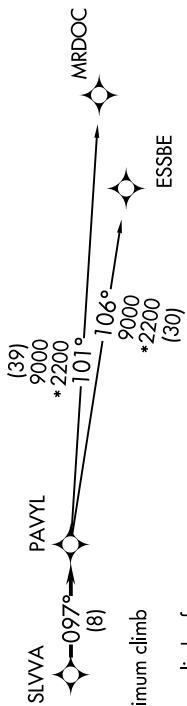
**TOP ALTITUDE:
ASSIGNED BY ATC**

RNAV 1 - DME/DME/IRU or GPS.
RADAR required.

NOTE: Jet departures at/above 10000,
maintain 280K until advised by ATC.



ATIS
127.425
GND CON
119.975
WILLOW RUN TOWER
125.275 256.9
DETROIT DEP CON
118.95 284.0



TAKEOFF MINIMUMS:
Rwy 23: Standard.
Rwys 5, 9: Standard with minimum climb
of 500' per NM to 1220.
Rwy 27: Standard with minimum climb of
209' per NM to 1000.

NOTE: Chart not to scale.

DEPARTURE ROUTE DESCRIPTION

TAKEOFF RUNWAY 5: Climb on heading 053° to 1220, then on heading 300° or as assigned by ATC, for RADAR vectors to SLVWA, thence....
TAKEOFF RUNWAY 9: Climb on heading 095° to 1220, then on heading 300° or as assigned by ATC, for RADAR vectors to SLVWA, thence....
TAKEOFF RUNWAY 23: Climb on heading 233° or as assigned by ATC, for RADAR vectors to SLVWA, thence....
TAKEOFF RUNWAY 27: Climb on heading 275° or as assigned by ATC, for RADAR vectors to SLVWA, thence....
 ...on track 097° to PAVYL, then on (transition). Maintain 17000 or as assigned by ATC, expect filed altitude 10 minutes after departure.
ESSBE TRANSITION (PAVYL3.ESSBE):
MRDOC TRANSITION (PAVYL3.MRDOC):

EC-1, 14 MAY 2026 to 11 JUN 2026